



CONSTRUCTION



AGRICULTURE



Side Lap Fastening Solutions for SUNTUF® Plus Greenhouses

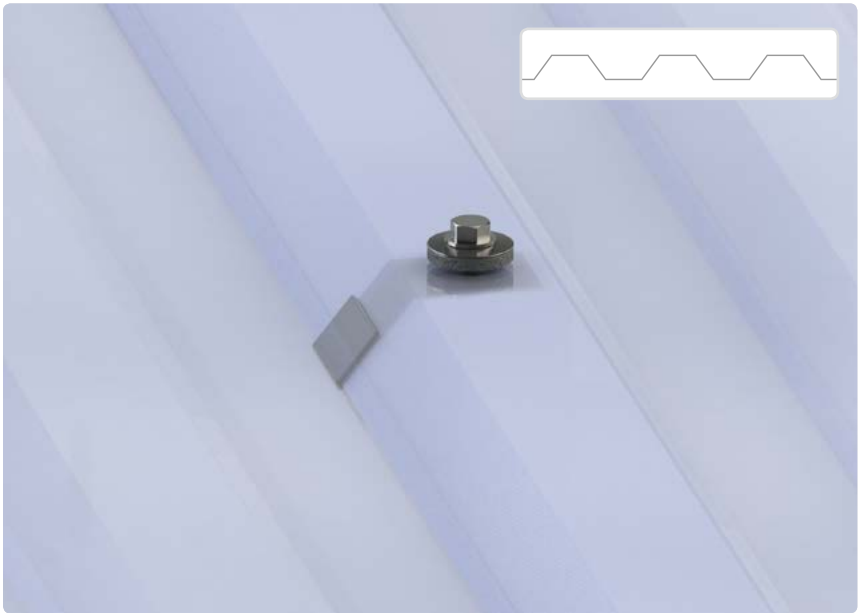


1. Lap clip (Patent Pending)

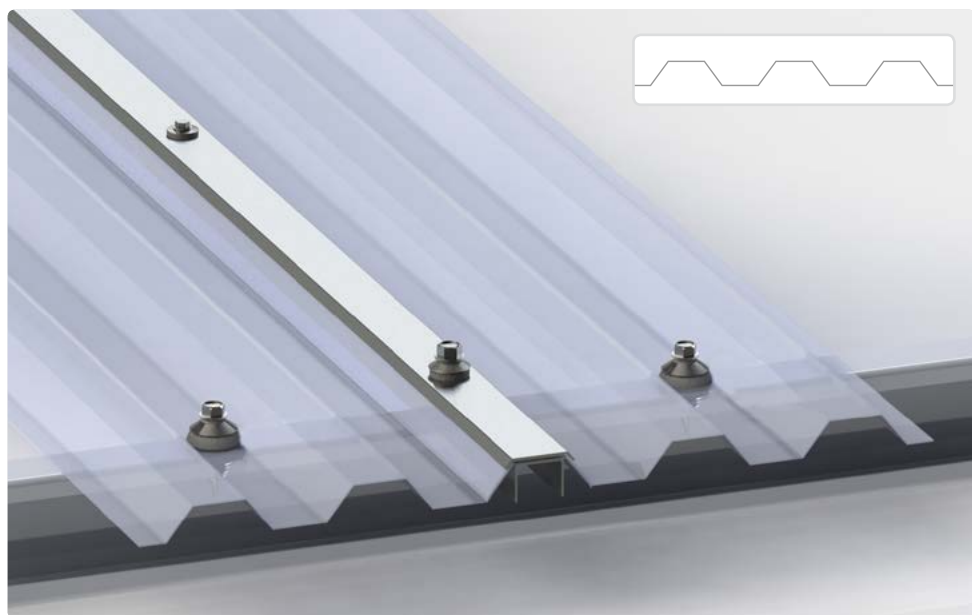
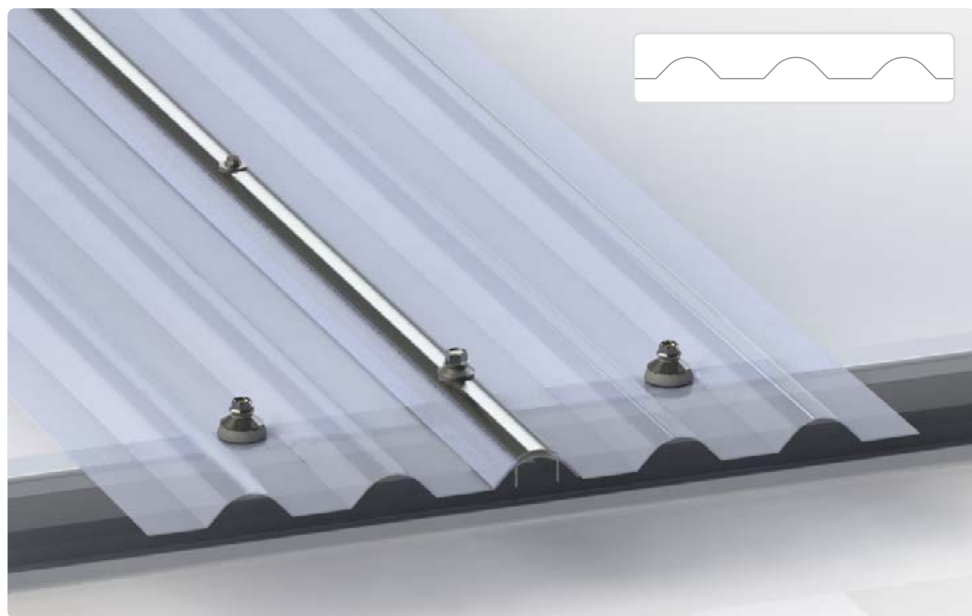
SUNTUF Plus Omega



SUNTUF Plus Greca

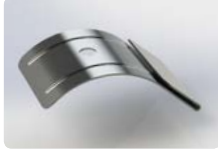


2. Side lap profile



1. Lap Clip (Patent Pending) System Components

Lap clip - Omega



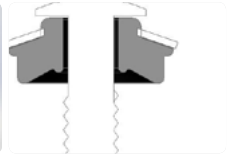
Lap clip - Greca



#10x3/4" self tapping screw with 5/8" washer/gasket fixed with lap clip at corrugation overlaps.



1/4"x2" self drilling screw with 19mm gasket/washer fixed on corrugation crests, into the purlins.



Lap Clip Installation Guidelines

Side Elevation - Omega

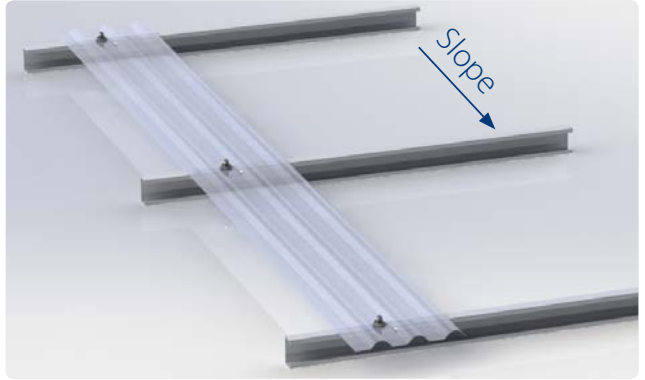


Side Elevation - Greca



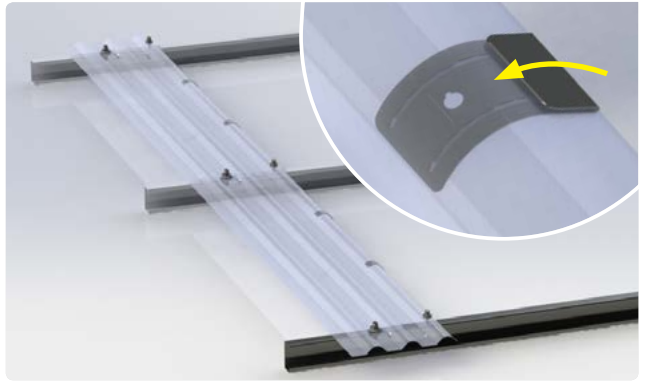
1

Install the first SUNTUF Plus sheet according to Palram's installation instructions.



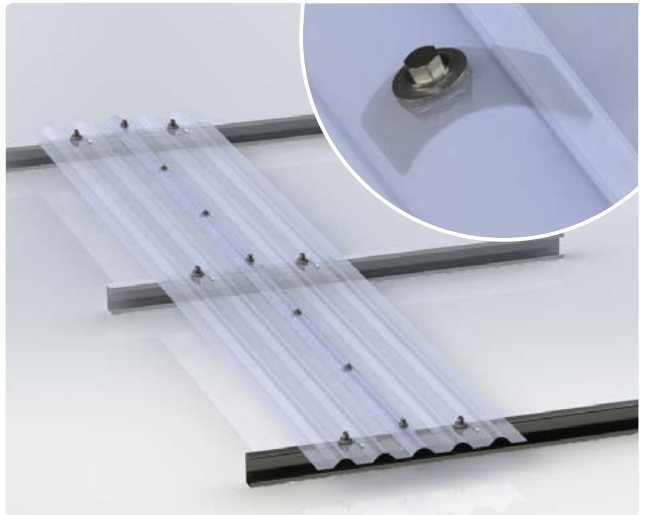
2

Place the lap clips between purlins at gaps of 300mm-400mm from one another.



3

Place the top sheet with corrugation over the lap clip. Insert #10X3/4" screw with 5/8" washer/gasket through the side lap corrugations and the lap clip bore. Use 1/4"X2" self drilling screw with 19mm washer/gasket above purlins.

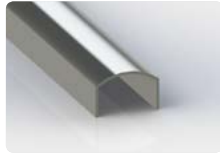


2. Side Lap Profile (Patent pending) System Components

Side lap profile
top part - Omega



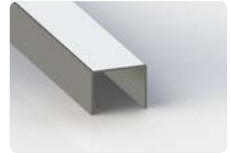
Side lap bottom
part - Omega



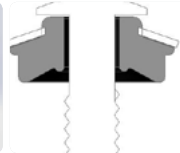
Side lap profile
top part - Greca



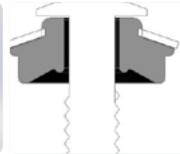
Side lap profile
bottom part -
Greca



1/4"x3/4" self tapping screw
with 19mm gasket/washer fixed on
corrugation crest, into the lap profiles
and SUNTUF Plus corrugation crests.



1/4"x2" self drilling screw with 19mm
washer/gasket fixed on corrugation crest
above purlins.



Side Lap Profile Installation Guidelines

Side Elevation Omega



Side Elevation Greca



1

Preparation for installation

Fix top and bottom parts of side lap profile to match one another using adjustable pliers. Take the dimensions from the structure

Using 5.5mm drill, prepare bores through the side lap profiles at distance of 300mm-400mm from one another.



2

Install the first SUNTUF Plus sheet according to Palram's installation instructions



3

Place bottom part of side lap profile under the last corrugation crest



4

Install the next SUNTUF Plus sheet, first corrugation crest overlaps the previous sheet. Install the top part of the side lap profile above the SUNTUF Plus sheets. Locate the bores exactly above the bottom part bores.



5

Above purlins install using 1/4"X2" self drilling screw with 19mm washer/gasket. Between purlins install using 1/4"X3/4" self tapping screw with 19mm washer/gasket.



Product images are for illustrative purposes only and may differ from the actual product.



PALRAM H.Q.
Tel: (972) 4 8459900
Fax: (972) 4 8444012
palram@palram.com
www.palram.com

PALRAM EUROPE LTD.
Tel: (44) 1302 380777
Fax: (44) 1302 380788
sales.europe@palram.com
www.palram.com

PALRAM AMERICAS
Tel: 610 2859918
Fax: 610 2859928
palramamericas@palram.com
www.palramamericas.com



80908 - 6.2019