



SUNPAL®

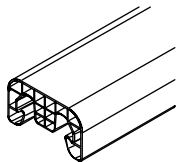
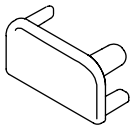
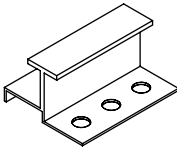
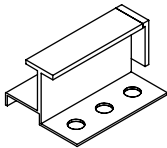

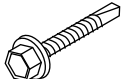
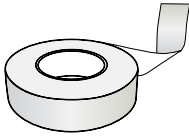
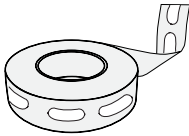
Multiwall Polycarbonate Standing Seam Architectural System

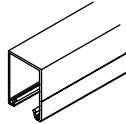
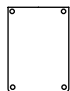
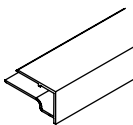

Installation Guide



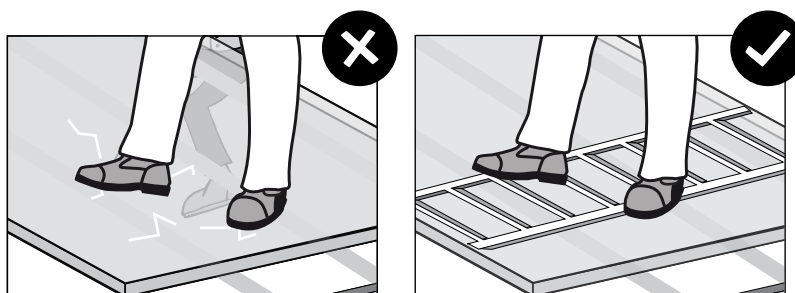
Build On.

System Components

Component		Drawing	Suppliance Data
Polycarbonate Joiner			Length: 12,000m
Polycarbonate Joiner End-cap			Quantity: Loose Colors: Clear
T-Fastener	10mm 18mm		Quantity: Loose Sizes: 10mm, 18mm Finish: Stainless steel
T-Lock	10mm 18mm		Quantity: Loose Sizes: 10mm, 18mm Finish: Stainless steel
Wood Screw Galvanized Hex-head tapping screw 4.8x25mm (1")			Quantity: 50/bags
Metal Screw Galvanized Hex-head self-drilling screw 4.8x19mm (3/4")			Quantity: 50/bags
Blocking (Solid) Tape	10mm 18mm		Quantity: 50m / Roll
Breather (Ventilated) Tape	10mm 18mm		Quantity: 33m / Roll

Component		Drawing	Suppliance Data
Aluminum Joiner * For vertical application please consult your local palram distributor.			Length: 7m Finish: Anodized
End-Cap for Aluminum Joiner			Finish: Mill/Anodised
Aluminum Sealing Strip	10mm 18mm		Length: 6m Finish: Anodised
Aluminum F-Profile	10mm 18mm		Length: 6m Finish: Anodised

Safety comes first

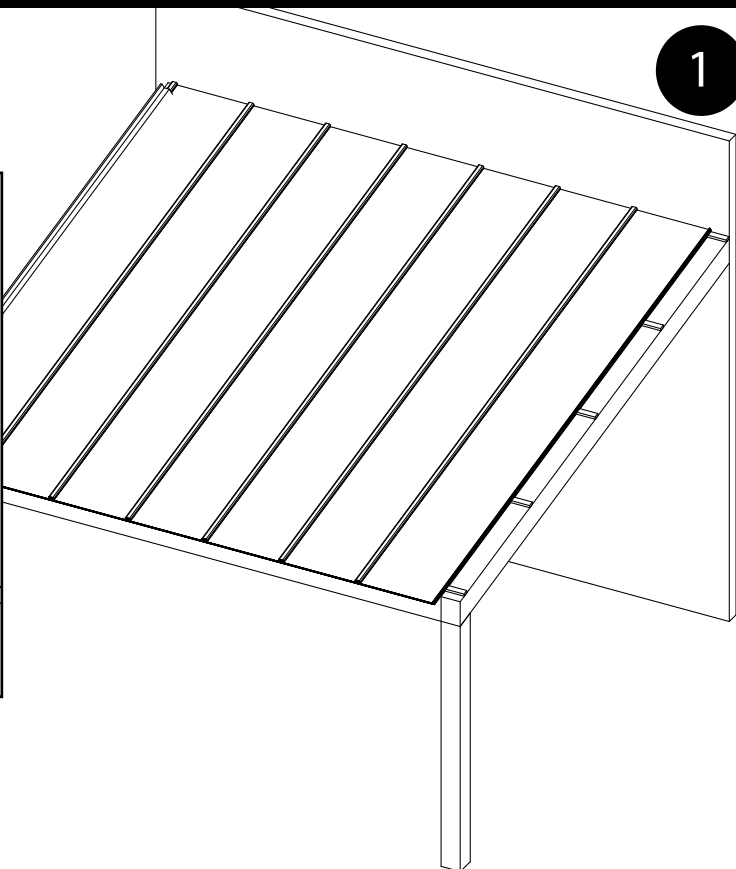
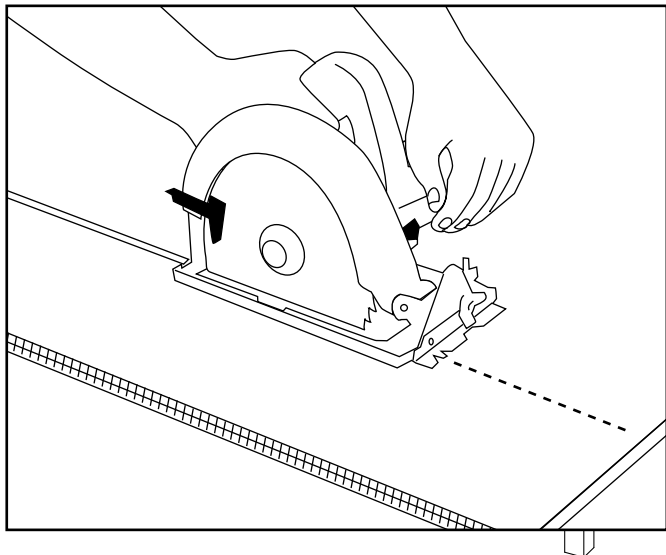


Do not step directly on the sheets between the purlins!
 When installing SUNPAL or doing maintenance work, always consider the sheet to be unfit to support a person's weight. Always use stepping ladders or crawling boards, supported by minimum three roof structural elements, when working on a glazed roof of any kind.

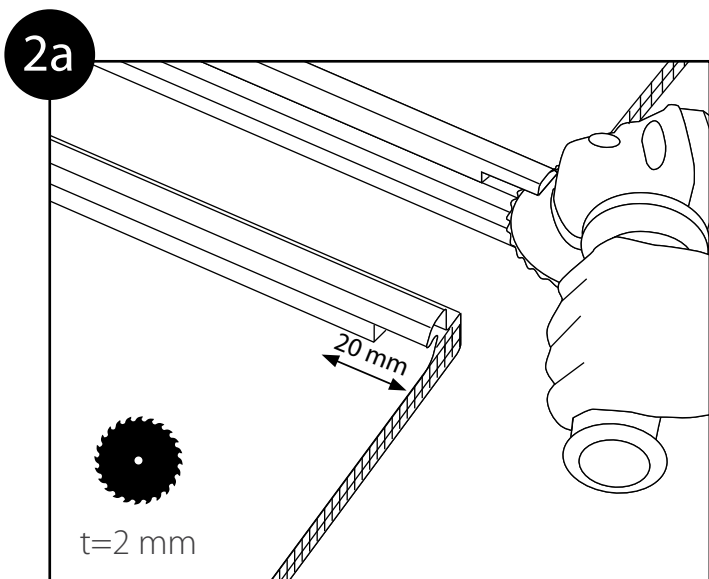


Pre-SUNPAL installation - Preparation of SUNPAL panels before installation

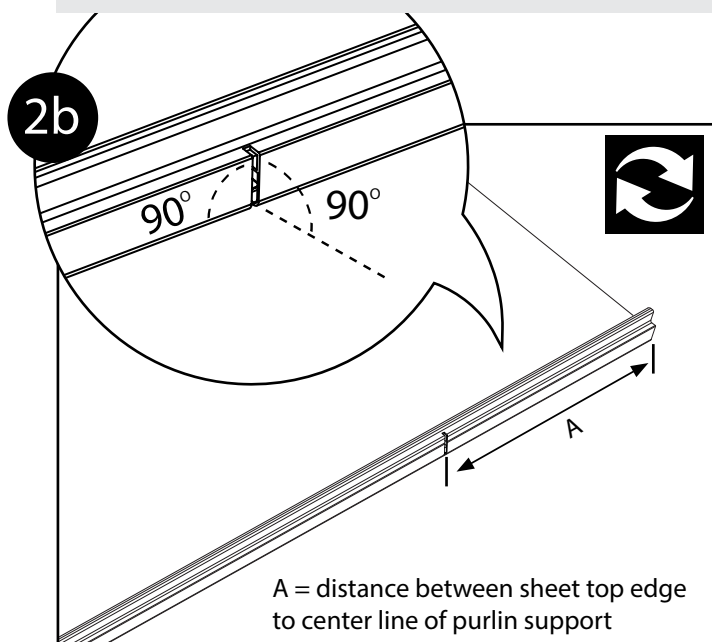
1. Cut to Size - Sheet Length



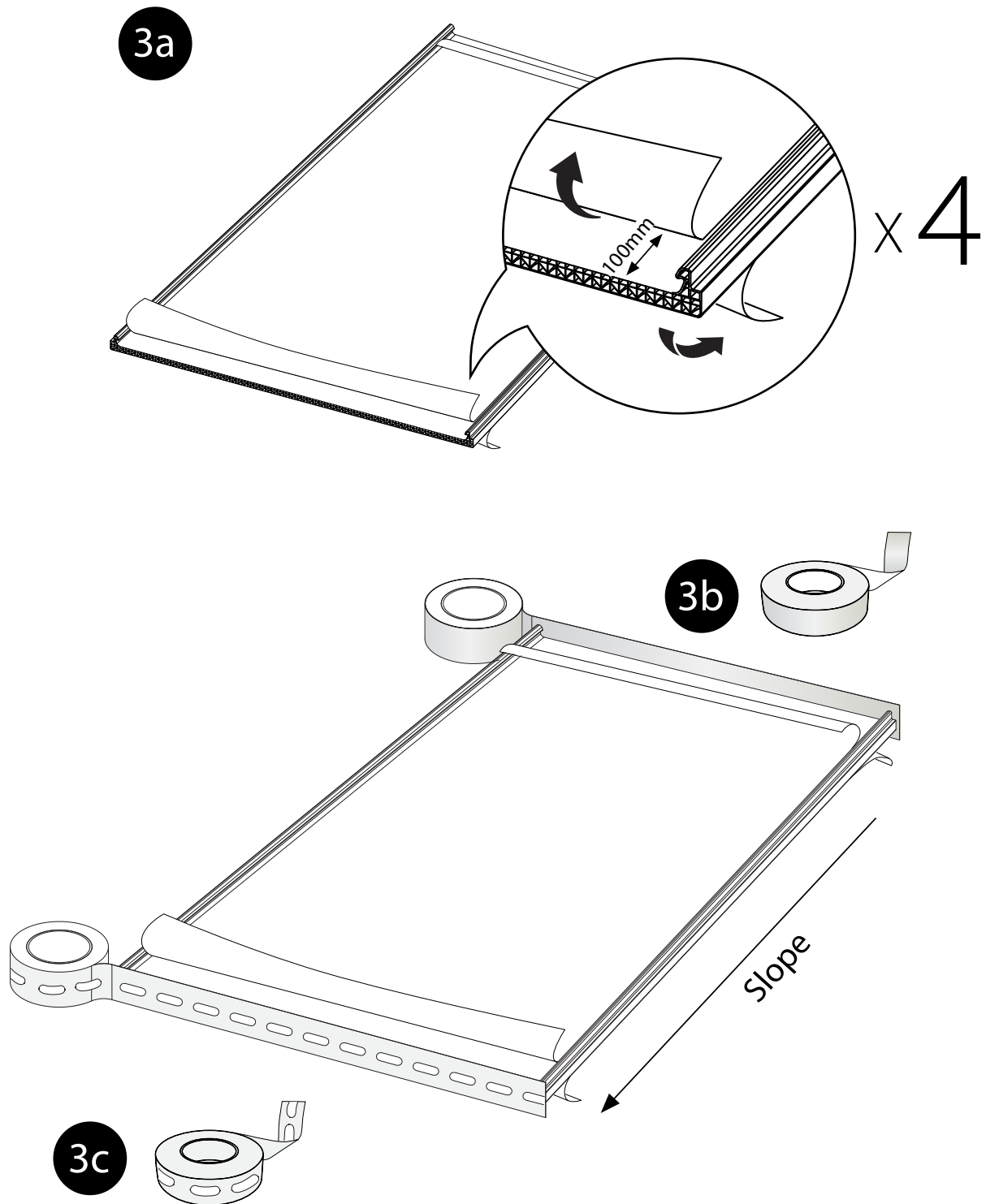
2a . Slit for AL Sealing Strip on bottom and top edge



2b . Slit for T-Stoppers



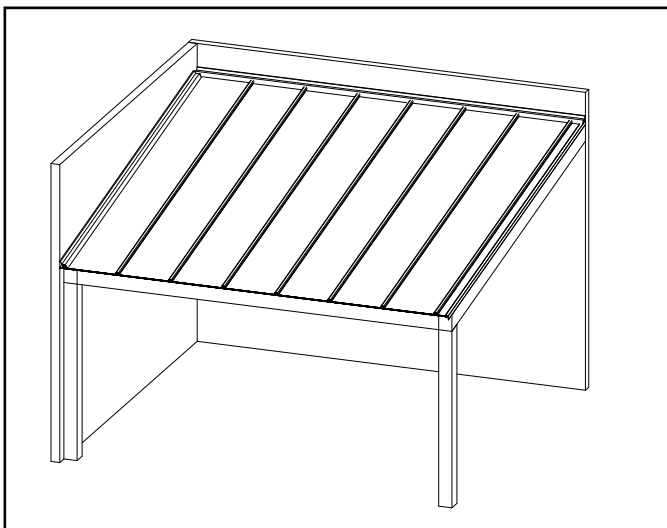
3. Recommended Seal with Breather and Blocking Tapes



Installation Type



Back & Side wall



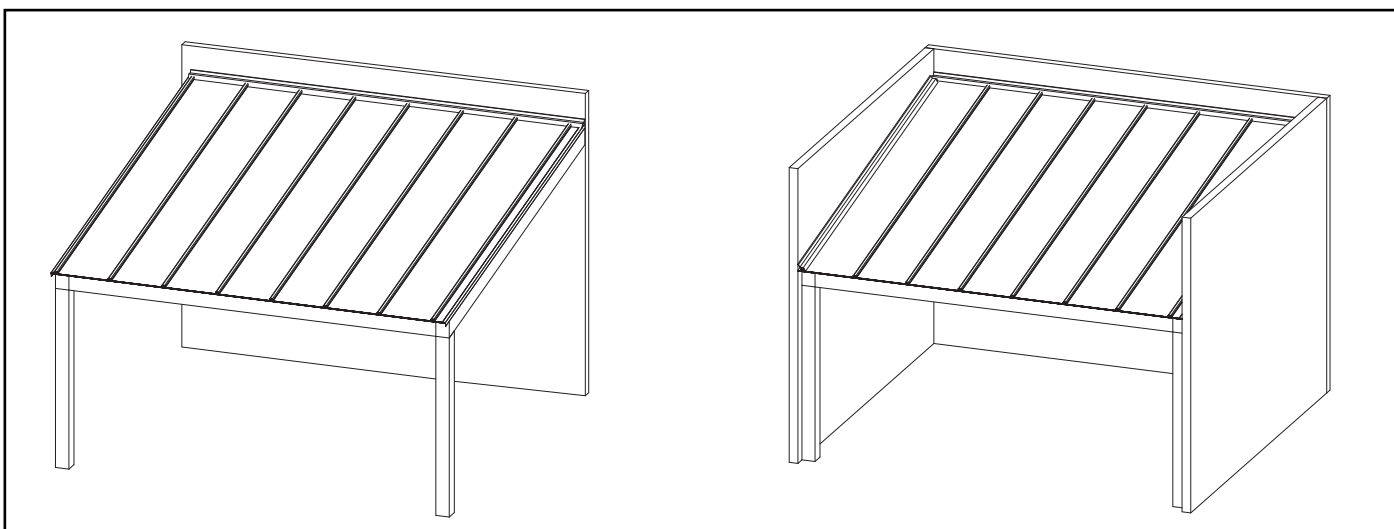
Go to Installation Sequence
Page No. 7



Back wall



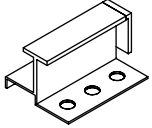
All three sides



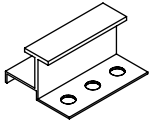
Go to Installation Sequence Page No. 10



Back & Side wall



T-Lock



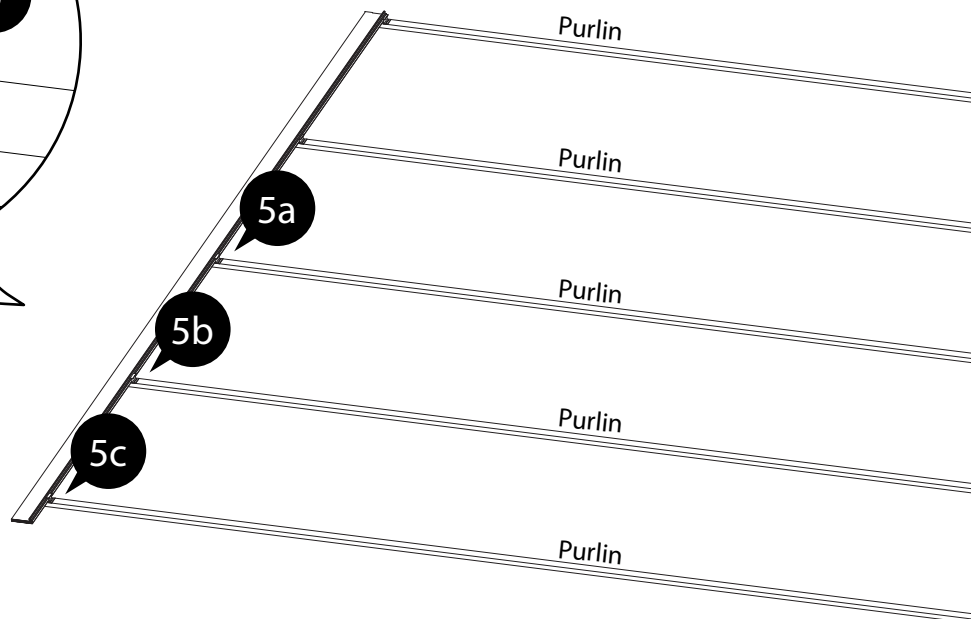
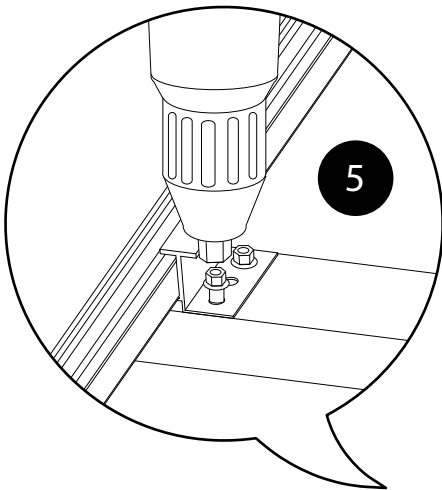
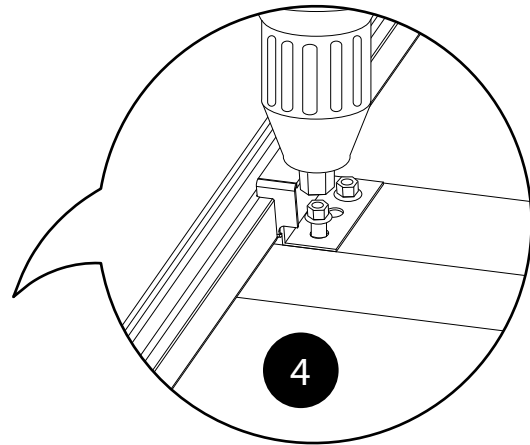
T-Fastener



Wood Screw

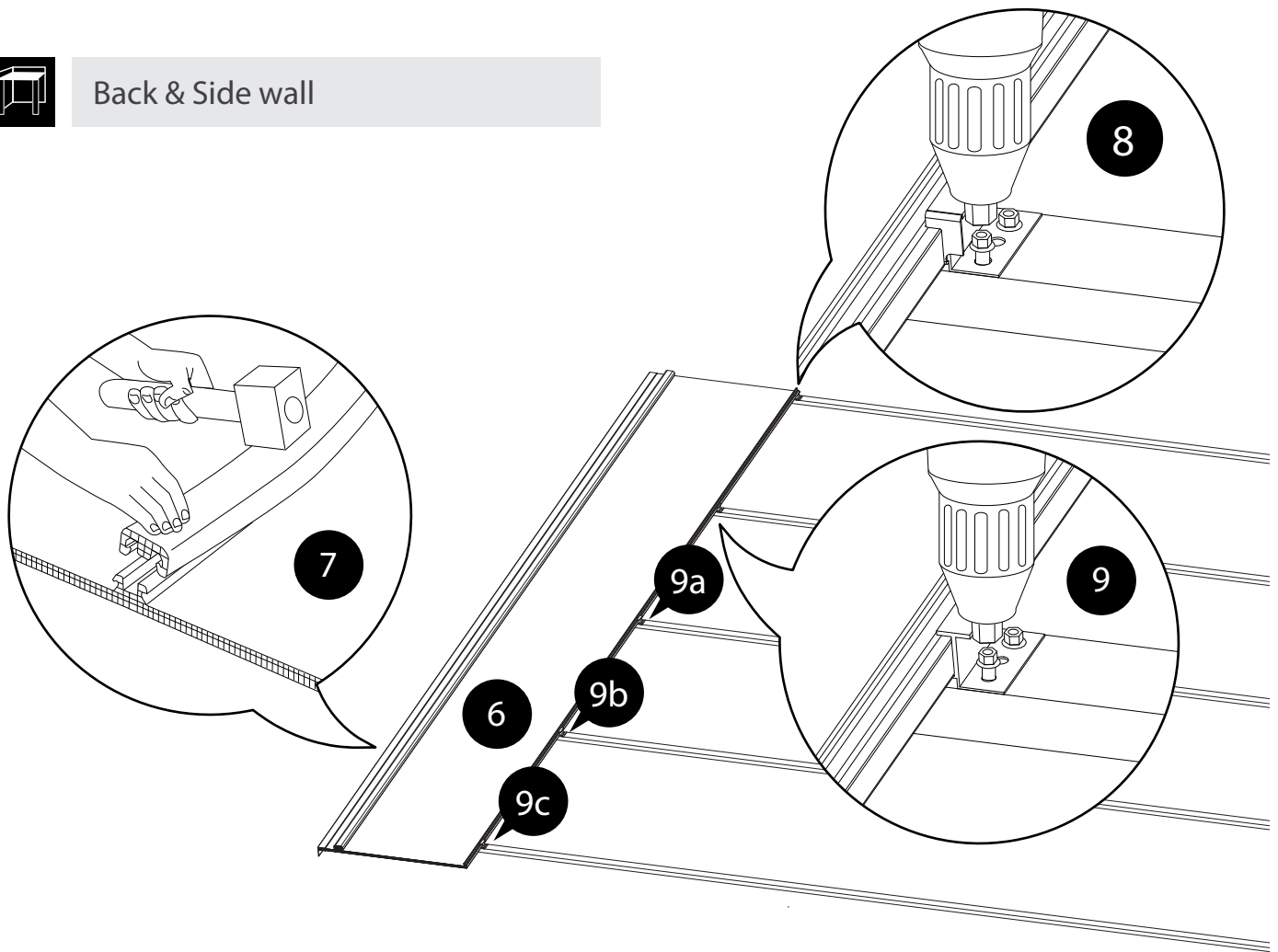


Metal Screw

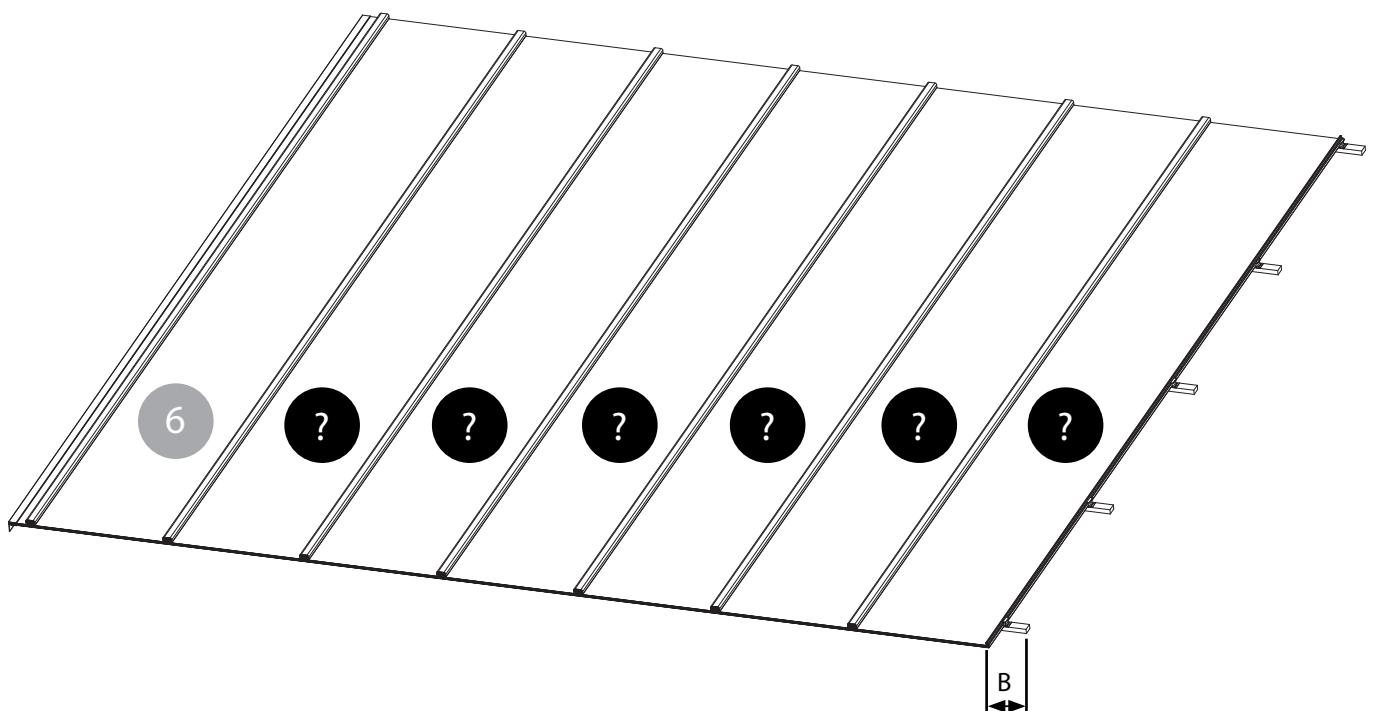




Back & Side wall

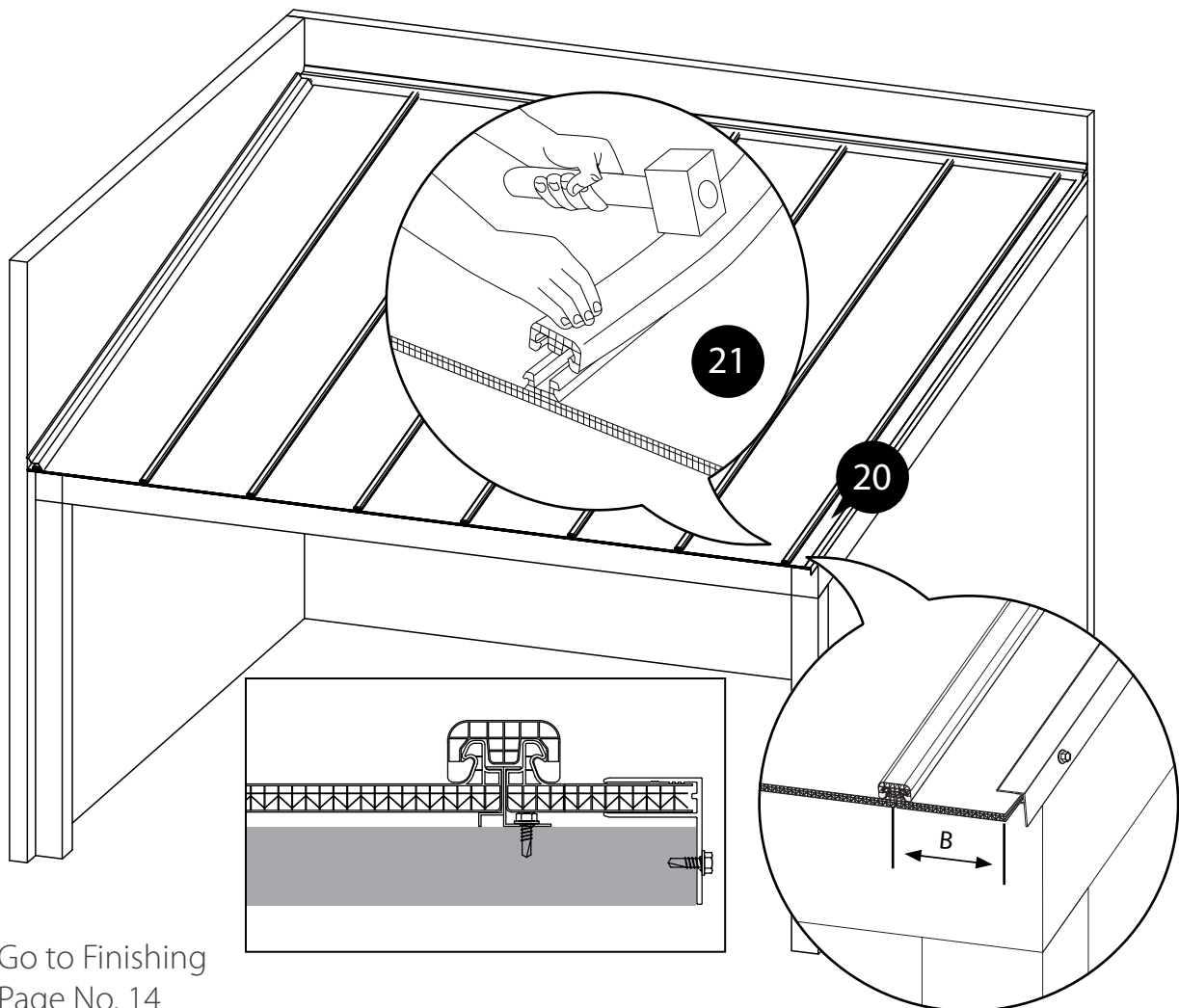
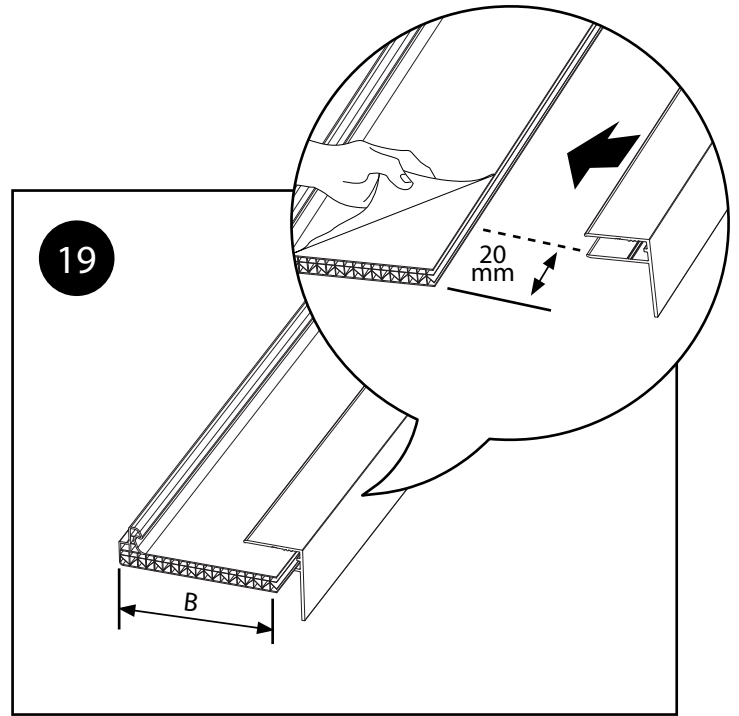
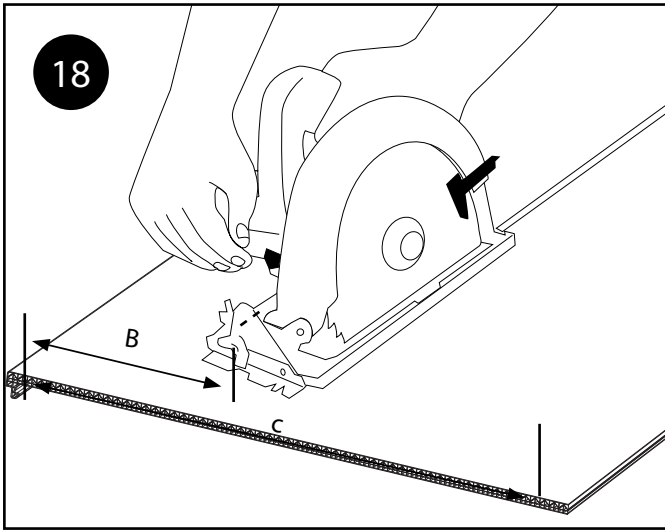


Repeat stages 8-11d



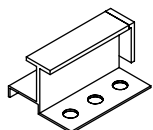


Back & Side wall

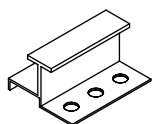


Go to Finishing
Page No. 14

Sheet Installation Sequence



T-Lock



T-Fastener



Wood Screw



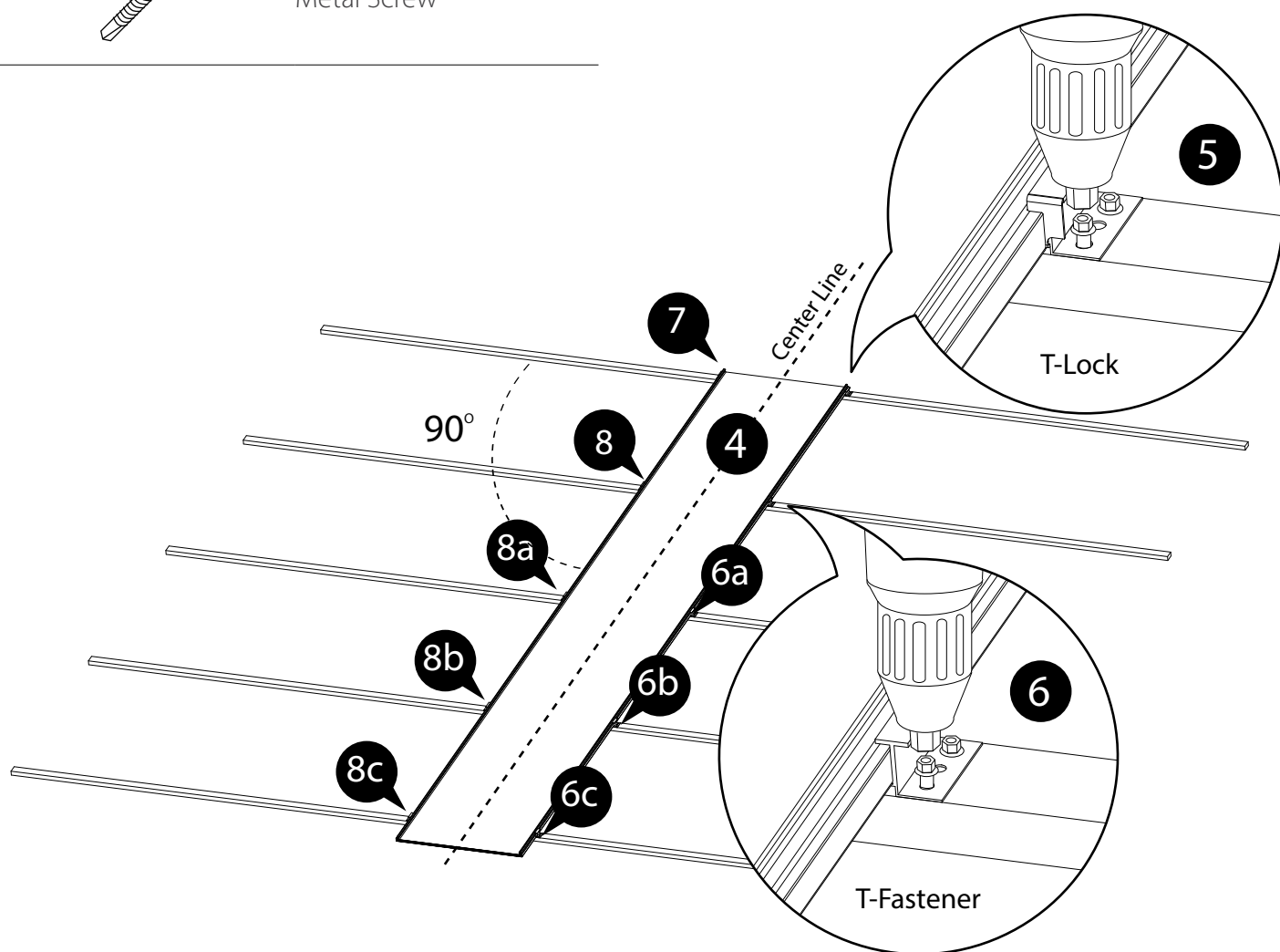
Metal Screw

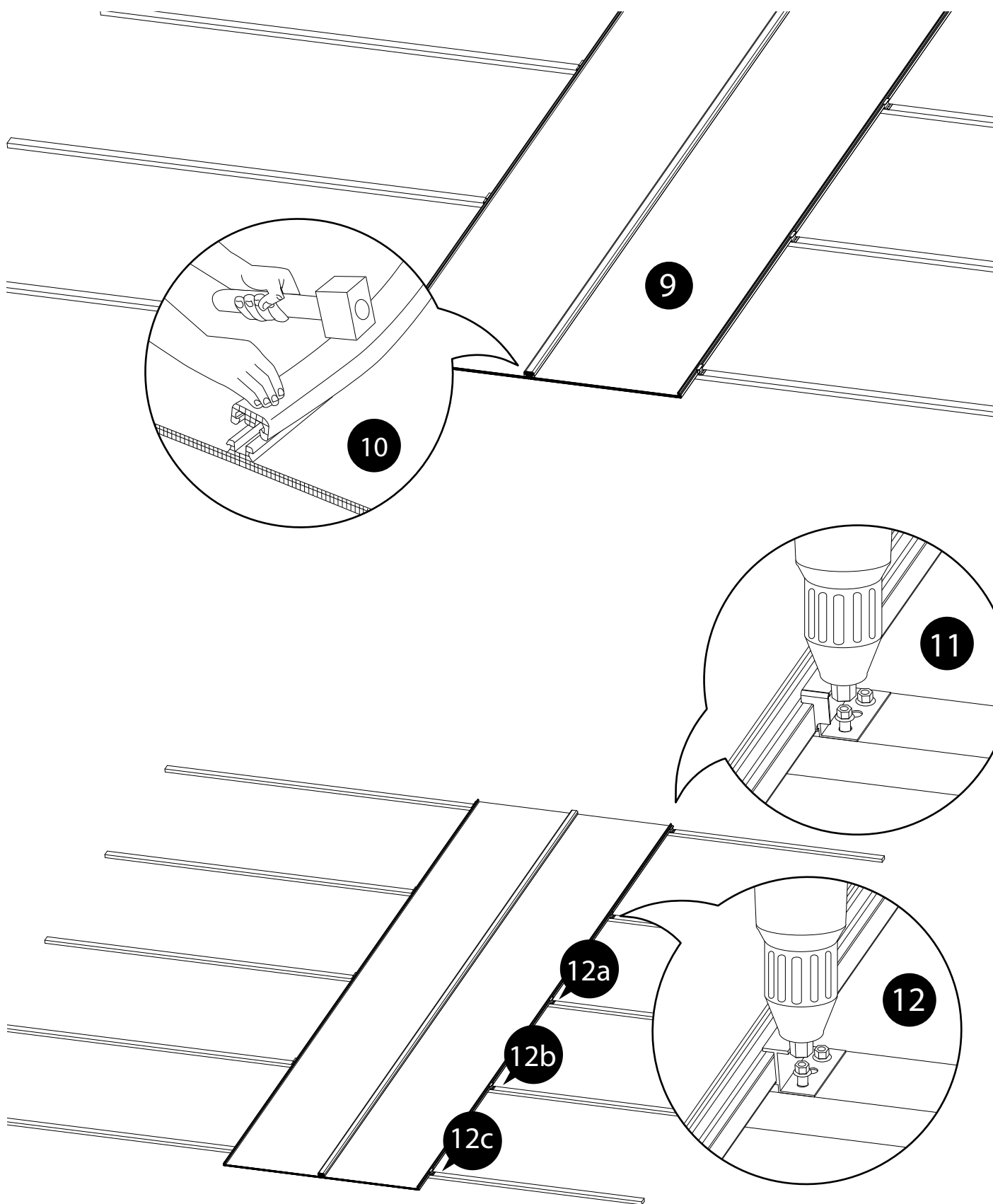


Back wall



All three sides



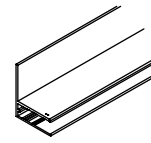




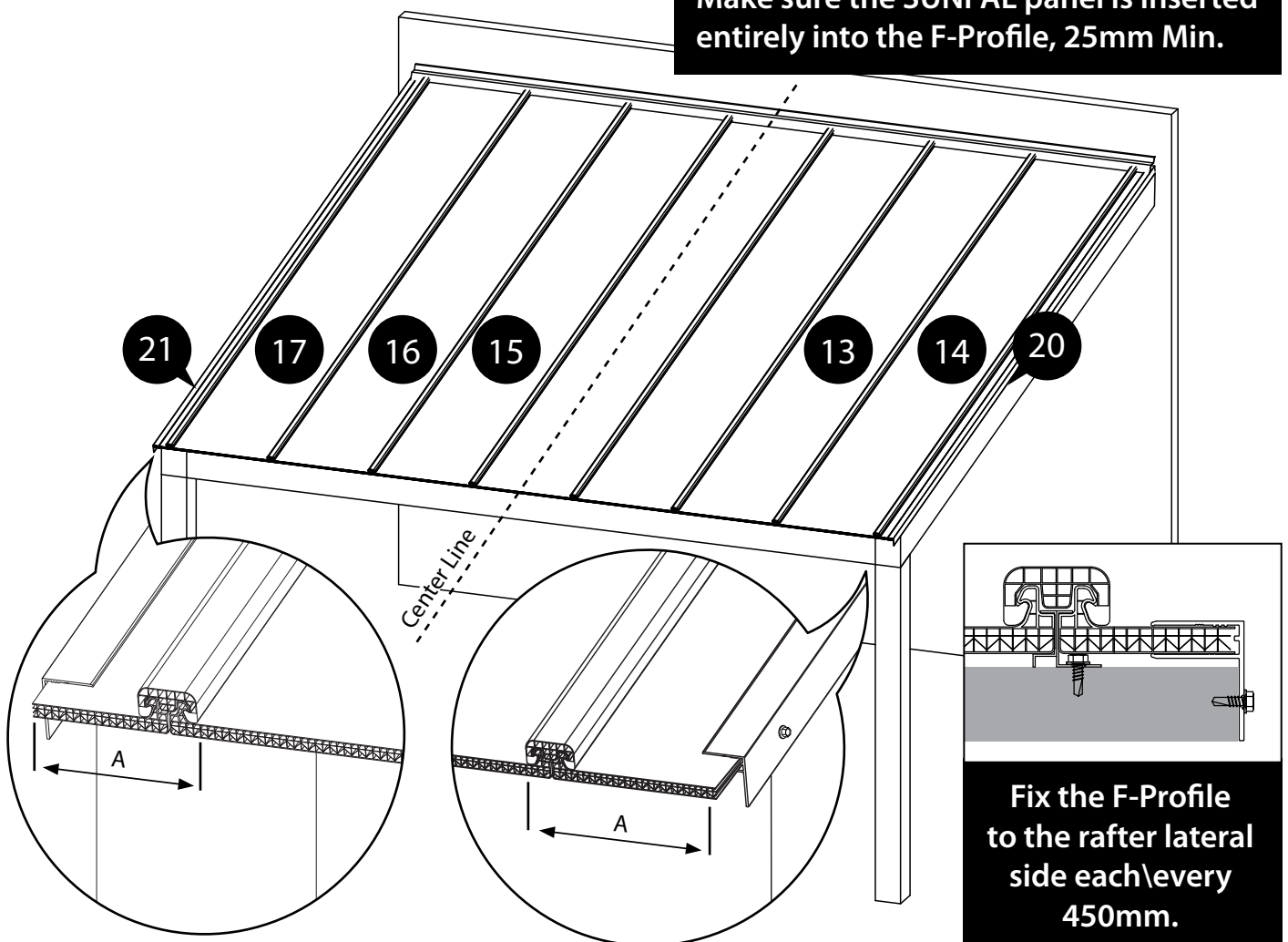
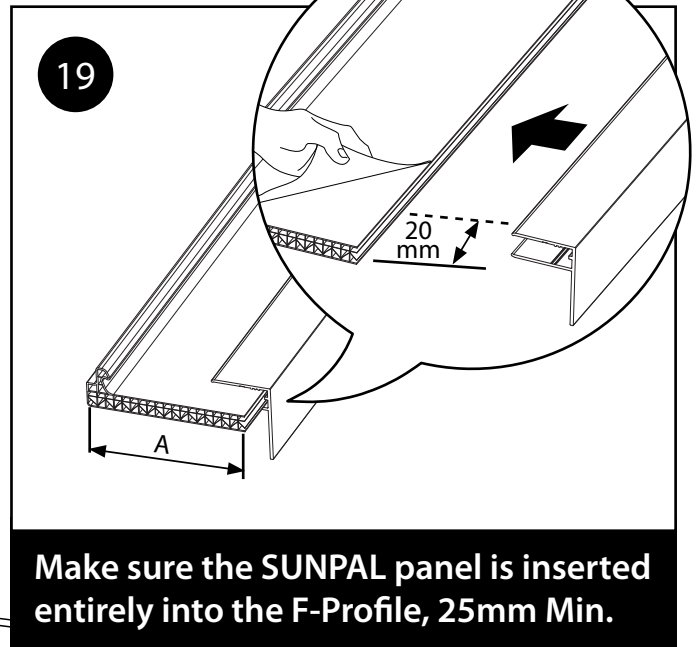
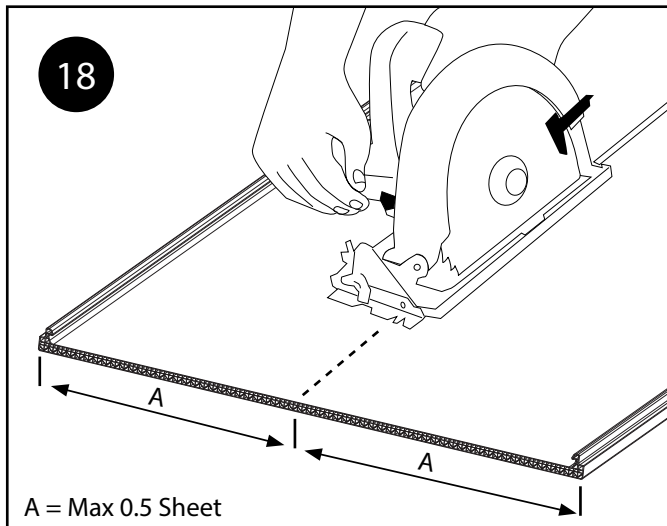
Back wall



Repeat stages
9-12d



Aluminum F-Profile



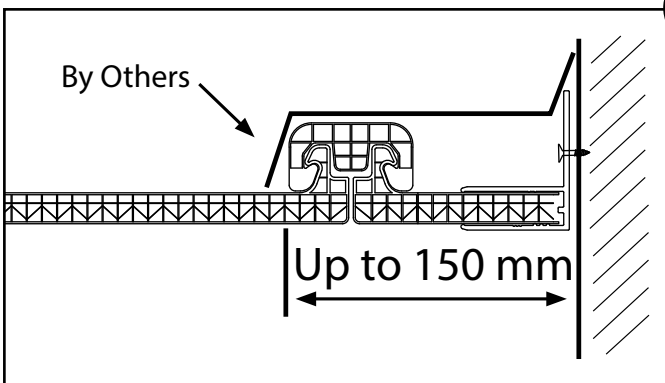
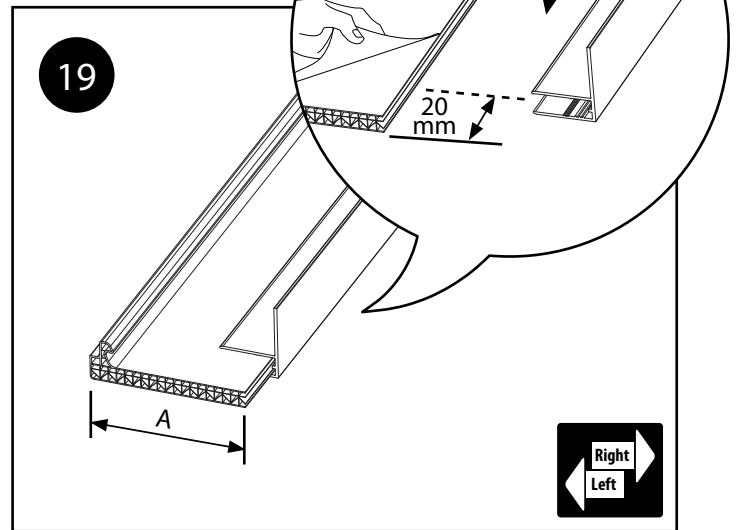
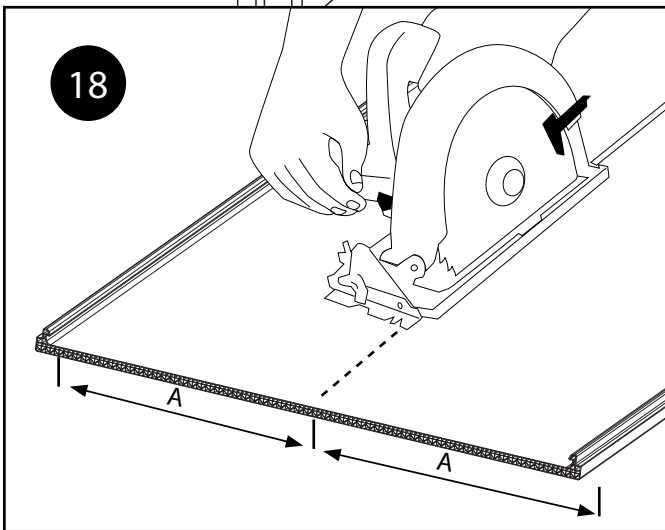
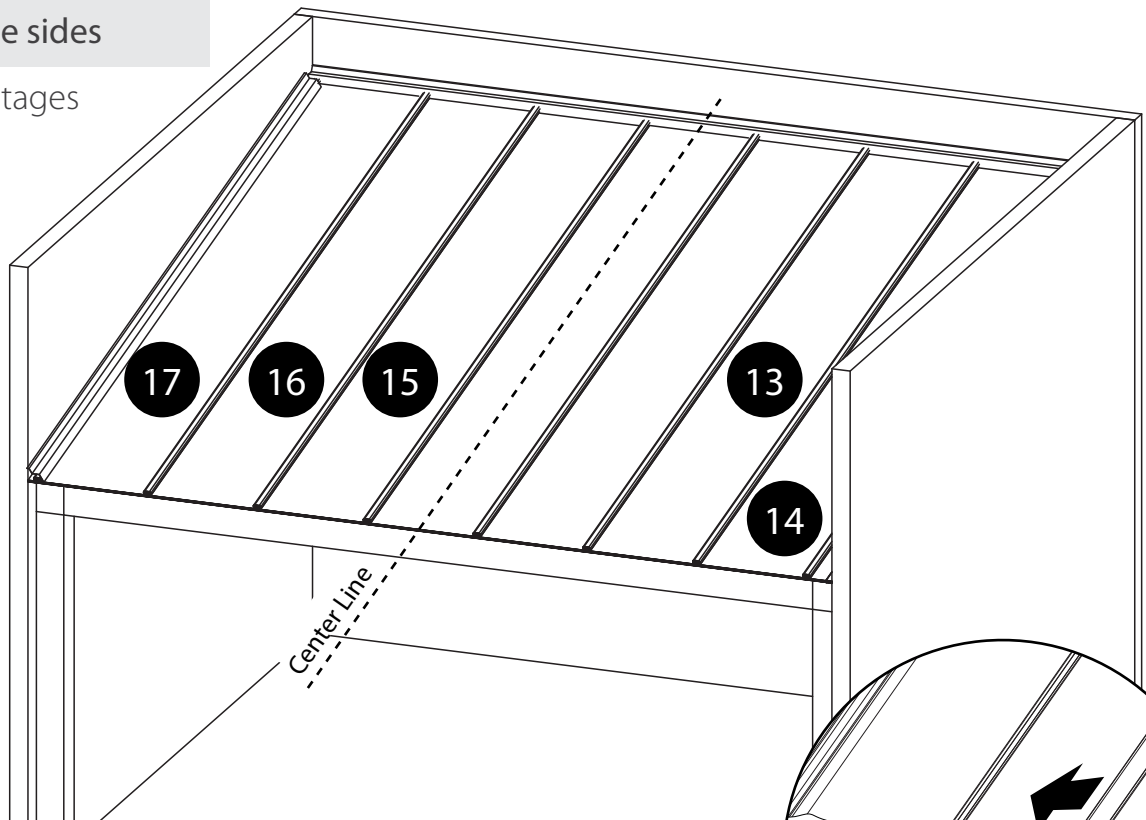
Fix the F-Profile
to the rafter lateral
side each\every
450mm.



All three sides

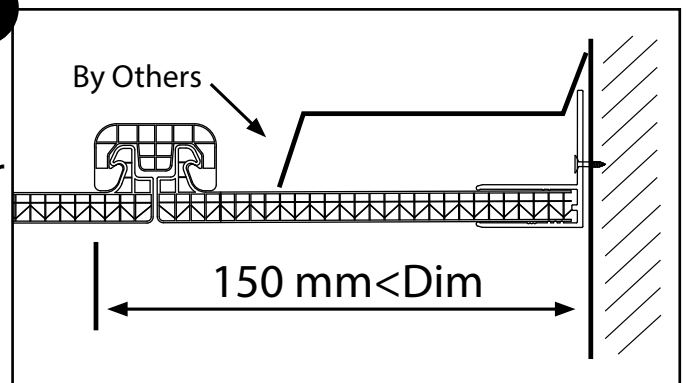


Repeat stages
9-12d

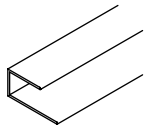


20

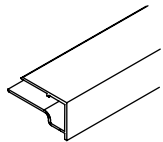
Or



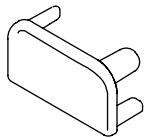
Finishing



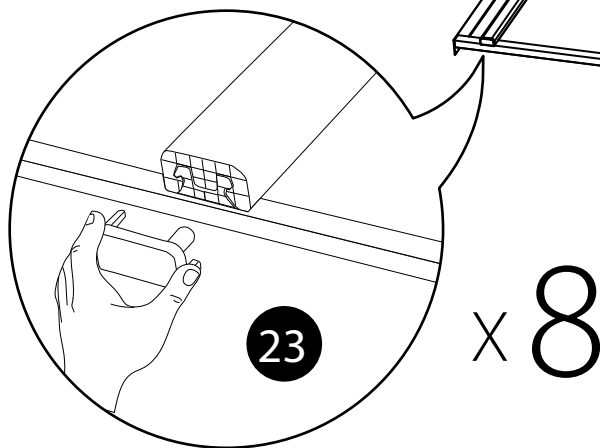
Polycarbonate U-Profile 0710



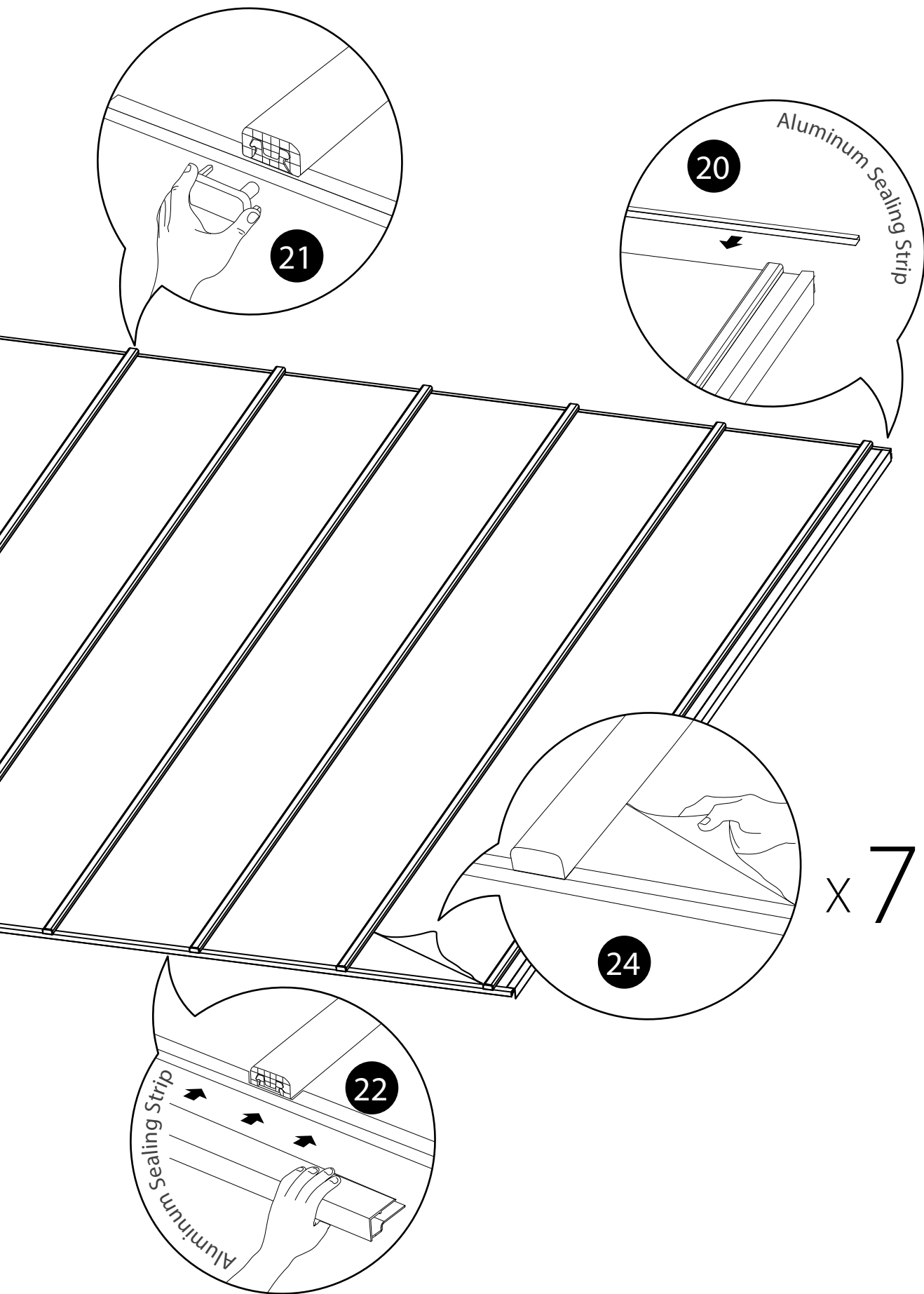
Aluminum Sealing Strip 0610



End-cap for Polycarbonate Joiner 0300



NOTE: Other designated elements like gutters, closures, ridge caps, trimming, flashing etc. are to be specially fabricated according to specific design.



**PALRAM SA/NT**

517A Cross keys Road
Cavan SA 5094
Tel: (08) 8262 2288
Fax: (08) 8262 3388
salessa@palram.com

PALRAM NSW/ACT

Unit 2, 26 Redfern St,
Wetherill Park, NSW 2764
Tel: (02) 8788 6100
Fax: (02) 8788 6199
salesnsw@palram.com

PALRAM QLD

Unit 9C / 380 Bilsen Road
Geebung QLD 4034
Tel: (07) 3172 5581
Fax: (07) 3172 5516
salesqld@palram.com

PALRAM VIC/TAS

34 Buys Court
Derrimut VIC 3030
Tel: (03) 9219 4444
Fax: (03) 9219 4455
salesvic@palram.com

PALRAM WA

74 Christable Way
Landsdale WA 6065
Tel: (08) 9302 4173
Fax: (08) 9302 5287
saleswa@palram.com



05.2019 - XXXXX

In as much as Palram Industries has no control over the use to which others may put the material, it does not guarantee that the same results as those described herein will be obtained. Each user of the material should make his own tests to determine the material's suitability for his own particular use. Statements concerning possible or suggested uses of the materials described herein are not to be construed as constituting a license under any Palram Industries patent covering such use or as recommendations for use of such materials in the infringement of any patent. Palram Industries or its distributors cannot be held responsible for any losses incurred through incorrect installation of the material. In accordance with our company policy of continual product development you are advised to check with your local Palram Industries supplier to ensure that you have obtained the most up to date information.