



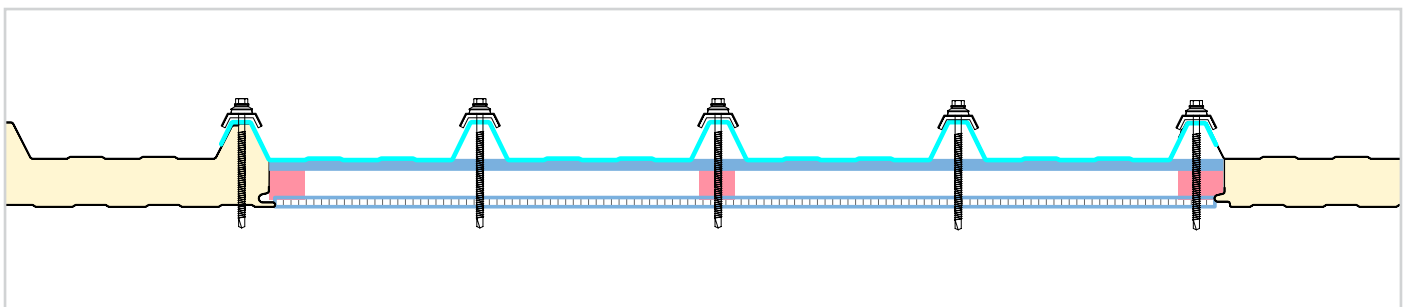
SUNBOX

Installation Guide

Recommended Accessories for Installation

Component	Drawing
<p>Longitudinal overlap</p> <p>"L" support profile</p> <p>50*50*3mm</p> <p>*Not supplied by Palram</p>	
<p>Self-tapping screw with 19 mm washer and EPDM gasket</p>	
<p>Self-drilling screw</p> <p>Length, according to panel thickness</p>	
<p>Butyl tape</p>	
<p>Expanding sealing tape</p>	
<p>Storm washer</p>	
<p>19 mm gasket/washer</p>	

System section



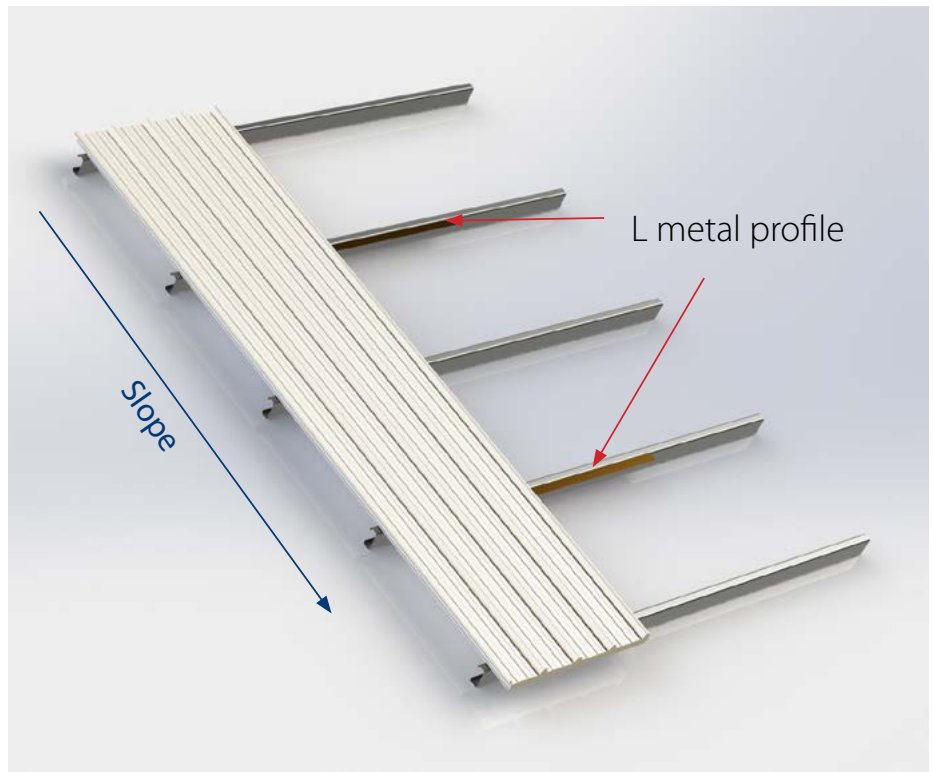
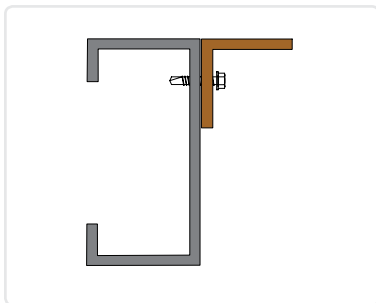
Installation Guidelines

1

Preparing the structure for SUNBOX installation

In case the purlin width is less than 70 mm, join L metal profiles to the main structure as shown in Figure 1.

These L profiles are needed only along the purlins where SUNBOX and the IMP overlap.



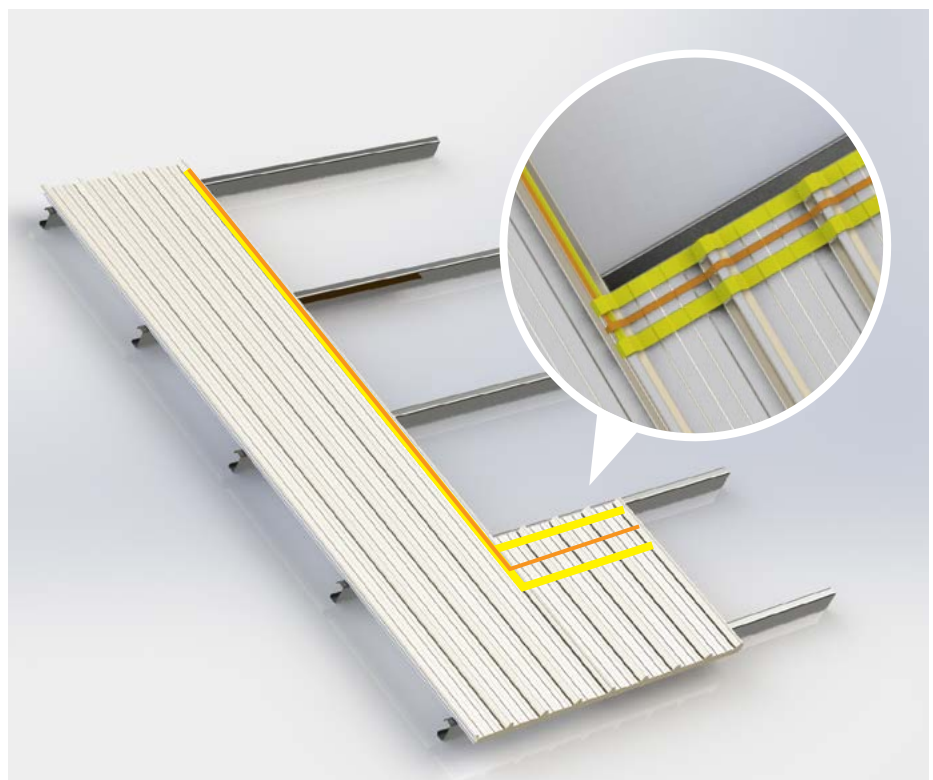
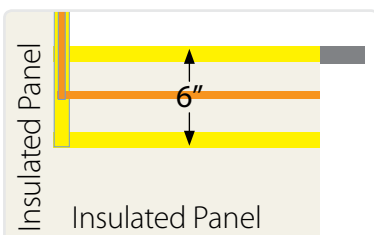
2

Preparing the Insulated panels for SUNBOX installation

Apply Butyl tape and expanding sealings tape on the marked lateral corrugation of the panel.

Apply 2 lines of butyl tape and expanding sealing tape between them across the lower panel as indicated in the drawing. Leave overlap corrugation free of screws.

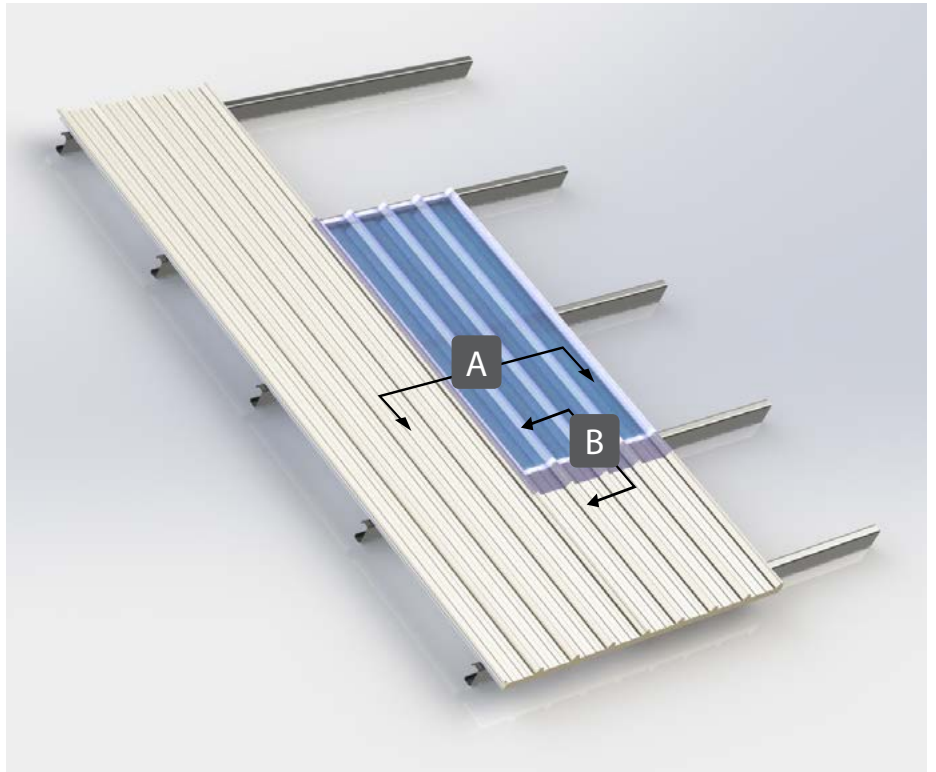
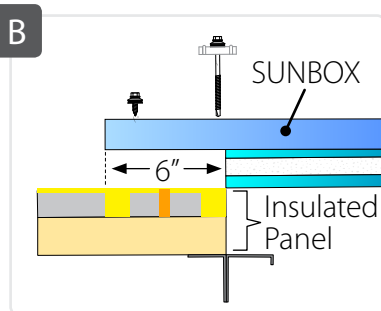
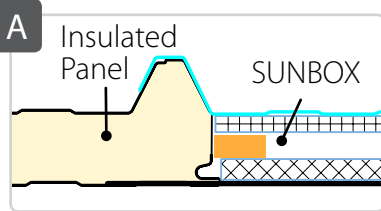
Butyl Tape
Expanding sealing tape



3

Laying SUNBOX on panels

Lay the SUNBOX on the panels in a way it overlaps both the lateral and the bottom panel.

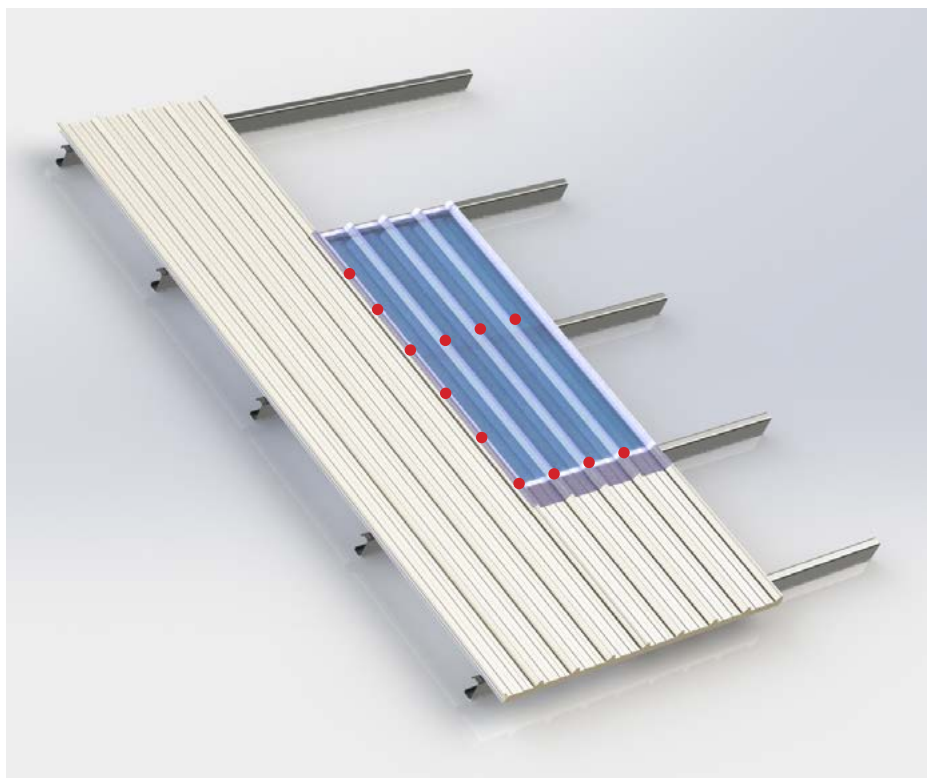


4

Pre-drilling holes and fixing the screws

Predrill 10 mm holes in the SUNBOX, in places where screws will be fixed, in order to allow for thermal expansion.



Fix all the screws and leave overlap corrugation free of screws.

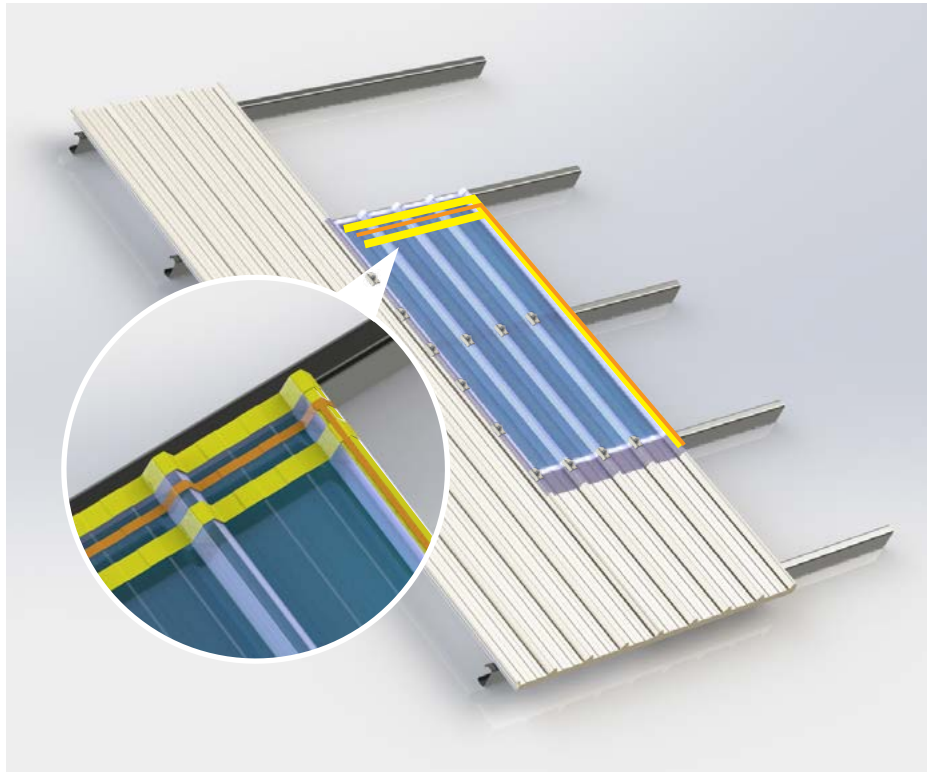
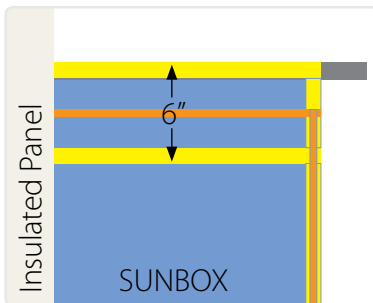


5

Applying butyl tape before placing the upper panel

Apply 2 lines of butyl tape and expanding sealing tape between them across the upper panel as indicated in the drawing. Apply Butyl tape and expanding sealing tape on the marked lateral corrugation of the SUNBOX.

 Butyl Tape
 Expanding sealing tape



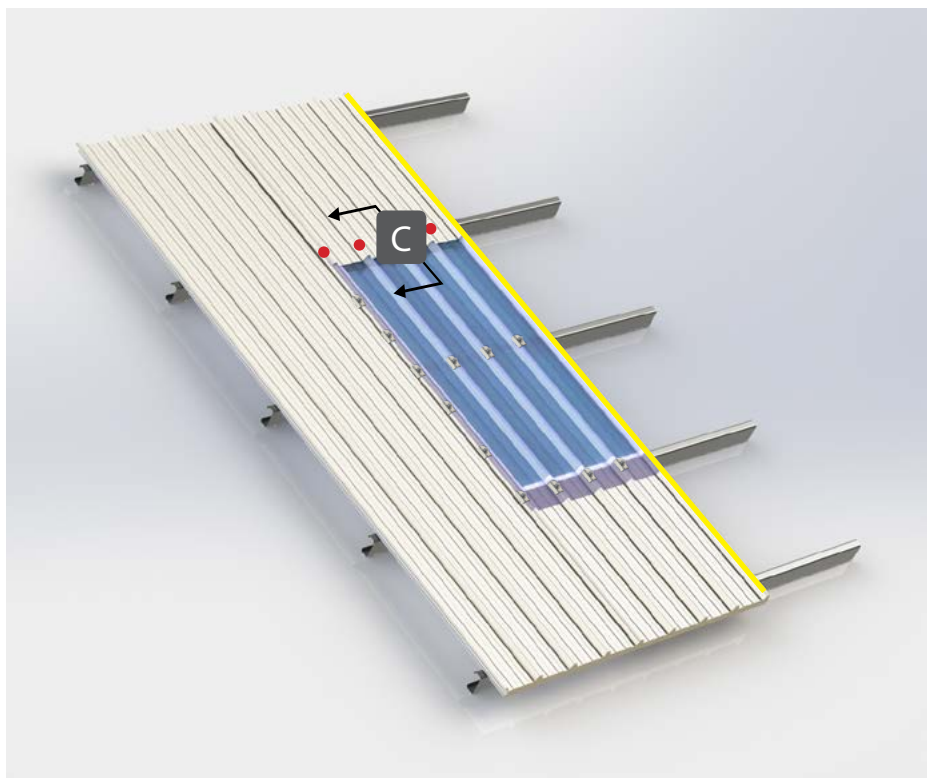
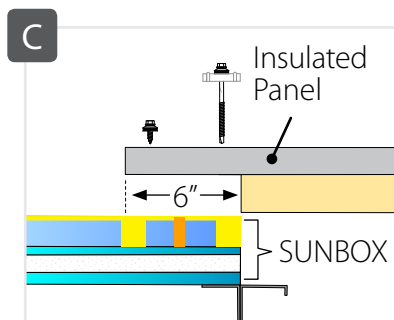
6

Laying and fixing the upper panel

Place the upper insulated panel over the SUNBOX and lateral panel.

Fix all the screws and leave lateral overlap corrugation free of screws.

Apply butyl tape On the lateral overlap corrugation.



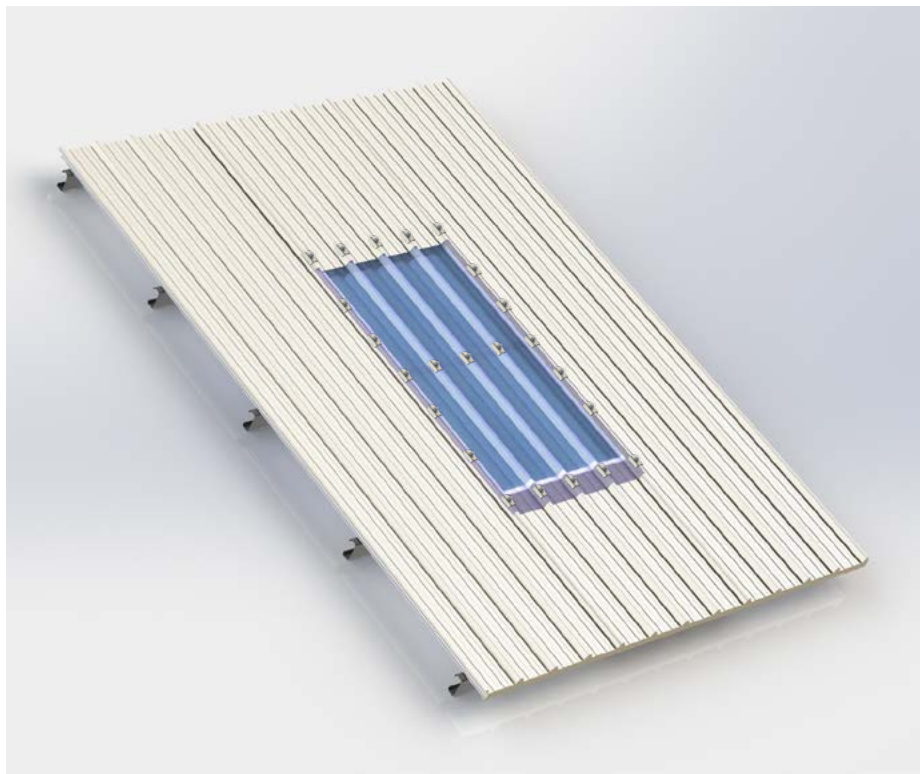
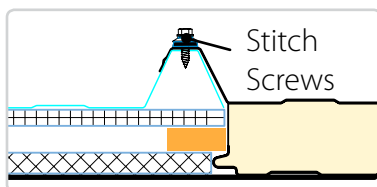
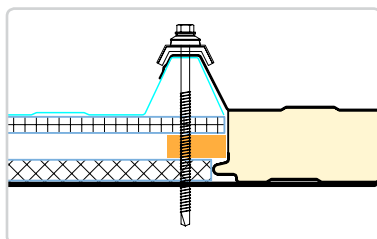
Installation Guidelines

7

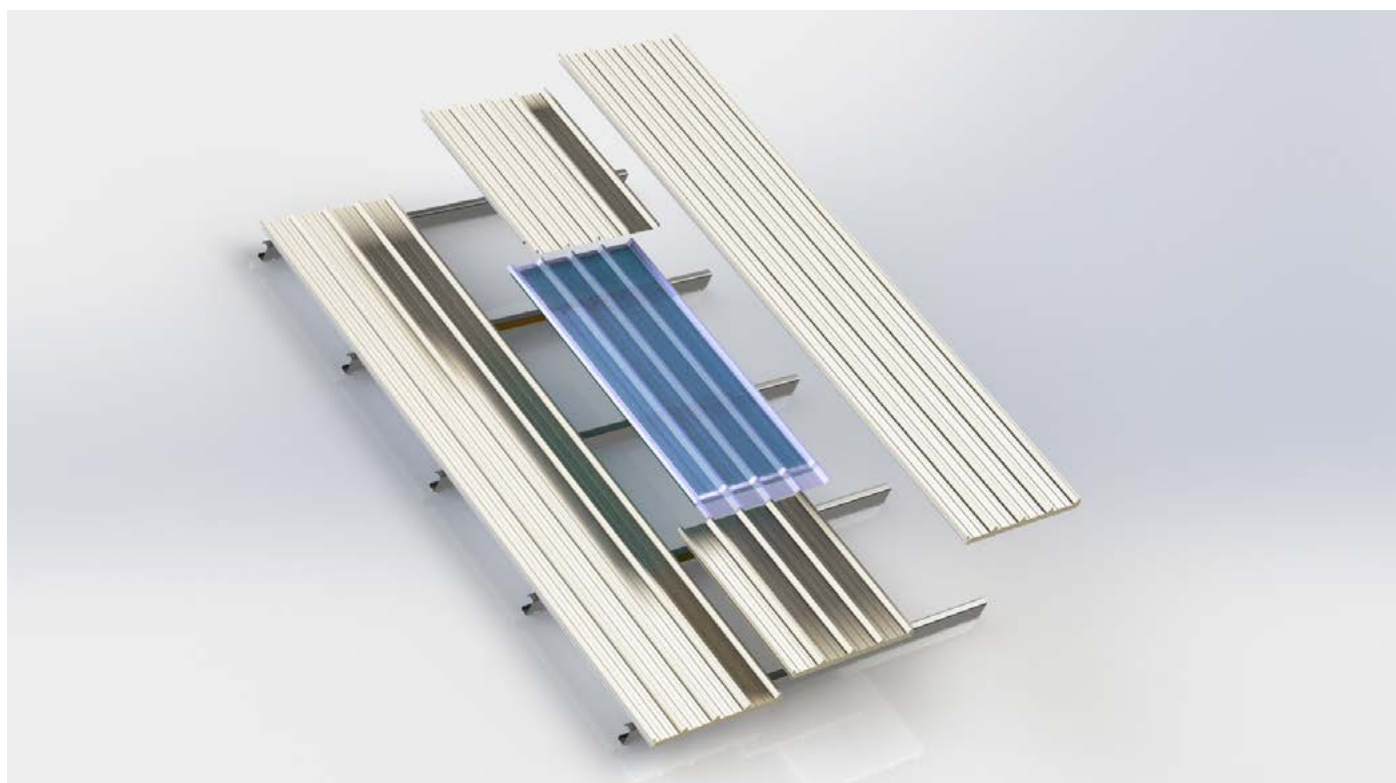
Fixing the upper insulated panel

Place the lateral insulated panel over the SUNBOX and the lateral panels.

Fix all the screws including stitching screws every 30-40 cm.

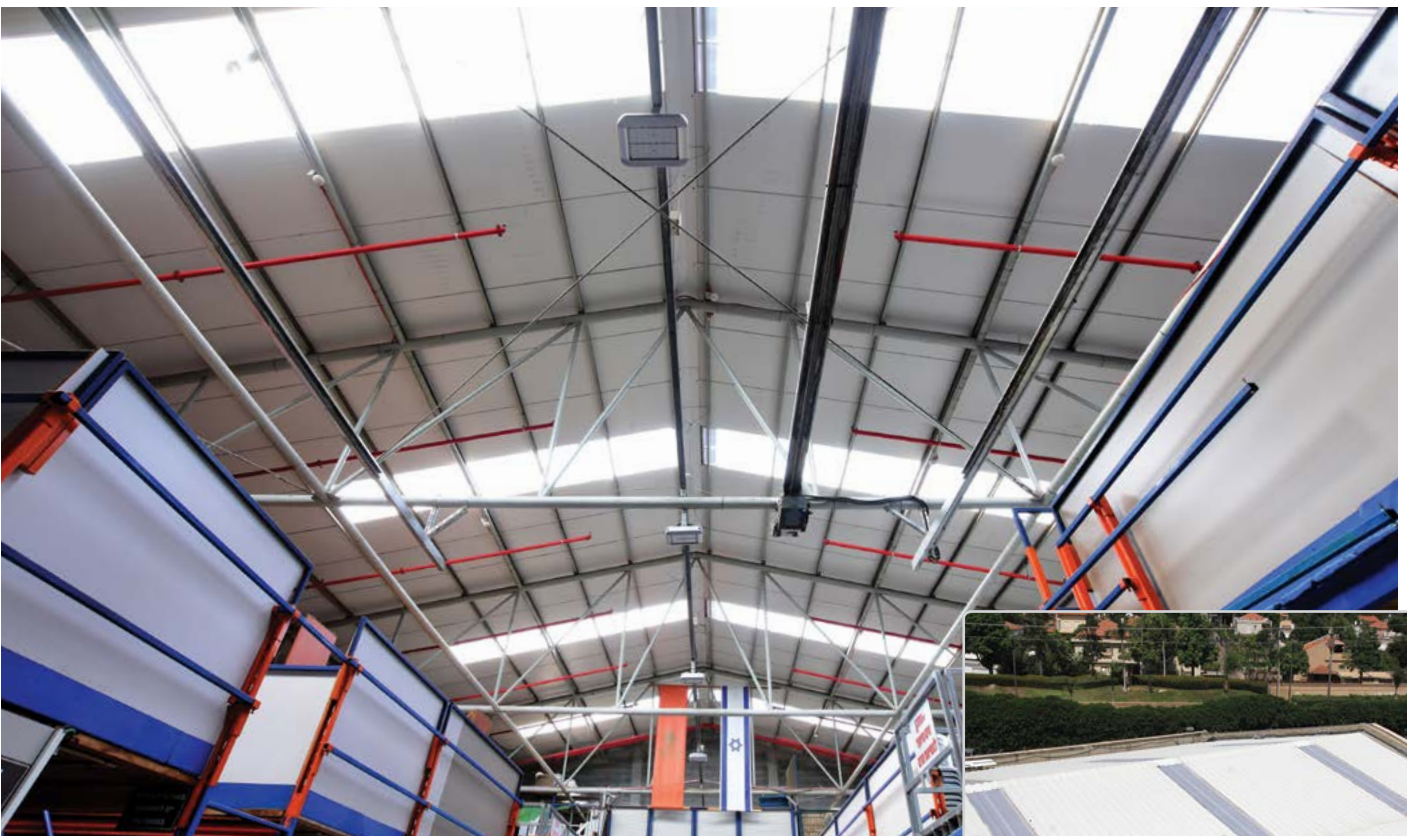


SUNBOX installation sequence

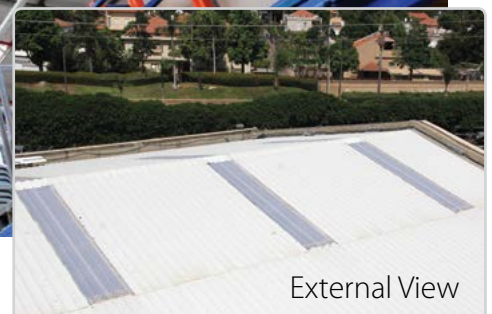




Project: Logistic Warehouse, Israel - Before SUNBOX.



Project: Logistic Warehouse, Israel - With SUNBOX.



External View



PALRAM H.Q.
Tel: +972 4 8459900
Fax: +972 4 8444012
palram@palram.com

PALRAM EUROPE LTD.
Tel: +44 1302 380777
Fax: +44 1302 380788
sales.europe@palram.com

PALRAM AMERICAS
Tel: 610 2859918
Fax: 610 2859928
palramamericas@palram.com



01.2019 - 86877

In as much as Palram Industries has no control over the use to which others may put the material, it does not guarantee that the same results as those described herein will be obtained. Each user of the material should make his own tests to determine the material's suitability for his own particular use. Statements concerning possible or suggested uses of the materials described herein are not to be construed as constituting a license under any Palram Industries patent covering such use or as recommendations for use of such materials in the infringement of any patent. Palram Industries or its distributors cannot be held responsible for any losses incurred through incorrect installation of the material. In accordance with our company policy of continual product development you are advised to check with your local Palram Industries supplier to ensure that you have obtained the most up to date information.

