



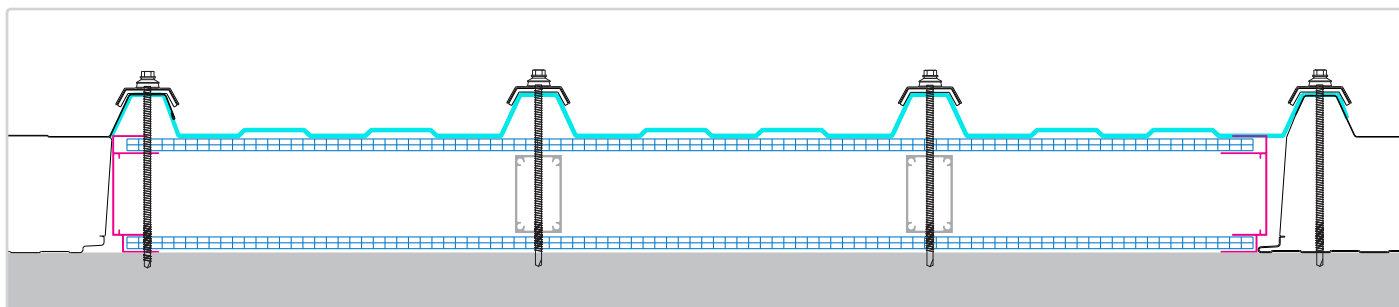
SUNBOX

Installation Guide

Recommended Accessories for Installation

Component	Drawing
Longitudinal overlap Angle support profile 50*50*3mm *Not supplied by Palram	
Stitching Screw Assembly 10Gx30mm	
Self-drilling screw Length - according to panel thickness	
Self-drilling screw 14 x 90 mm with bonded washer	
Butyl tape	
Storm washer	

System section



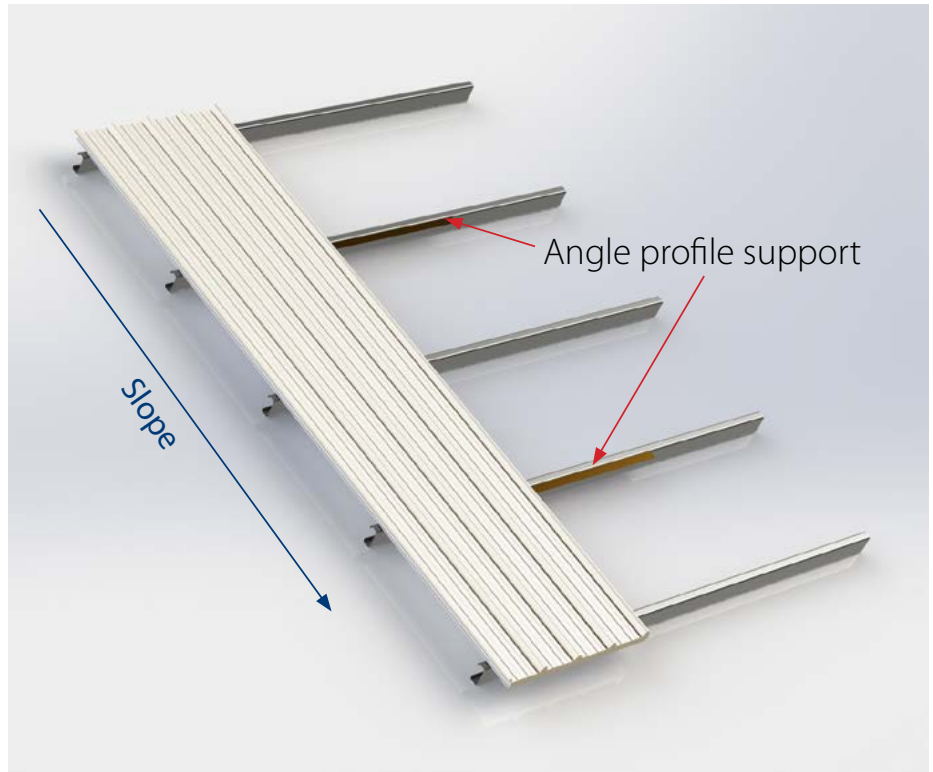
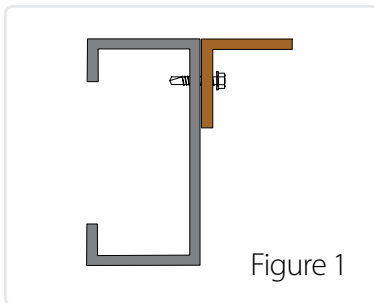
Installation Guidelines

1

Preparing the structure for SUNBOX installation

If the purlin width is less than 70 mm, join Angle support profiles to the main structure as shown in Figure 1.

These Angle support profiles are needed only along the purlins where SUNBOX and the IMP overlap.

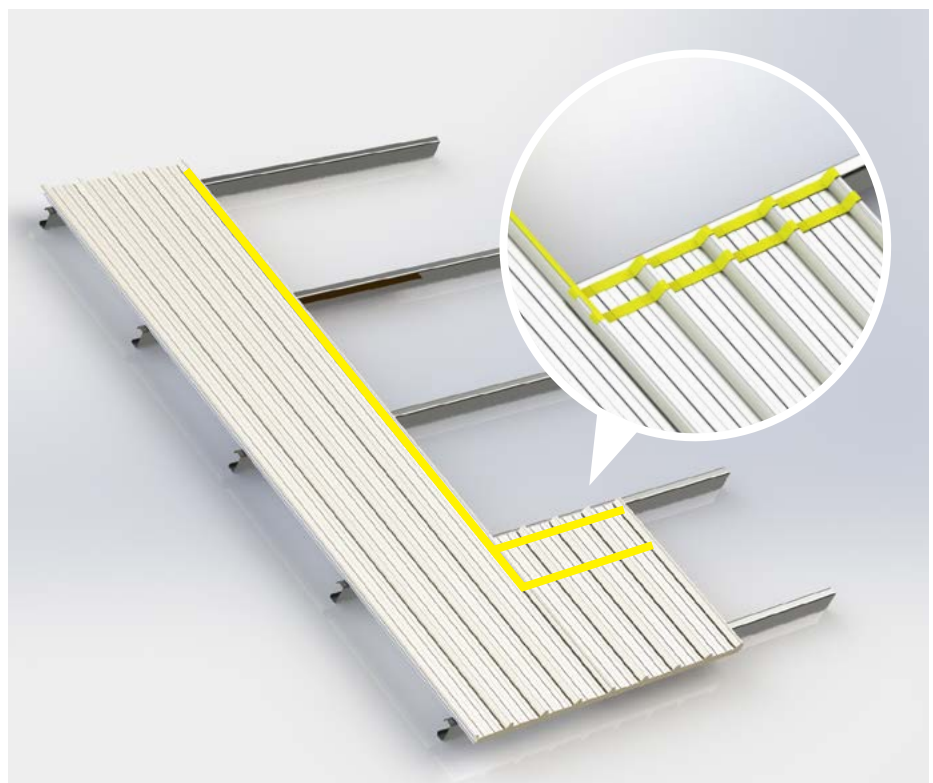
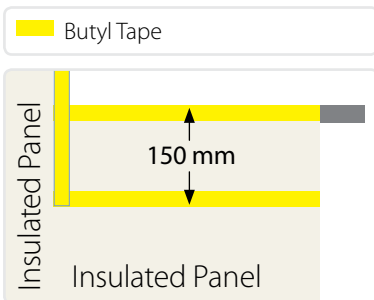


2

Preparing the Insulated panels for SUNBOX installation

Apply Butyl tape on the marked lateral corrugation of the panel.

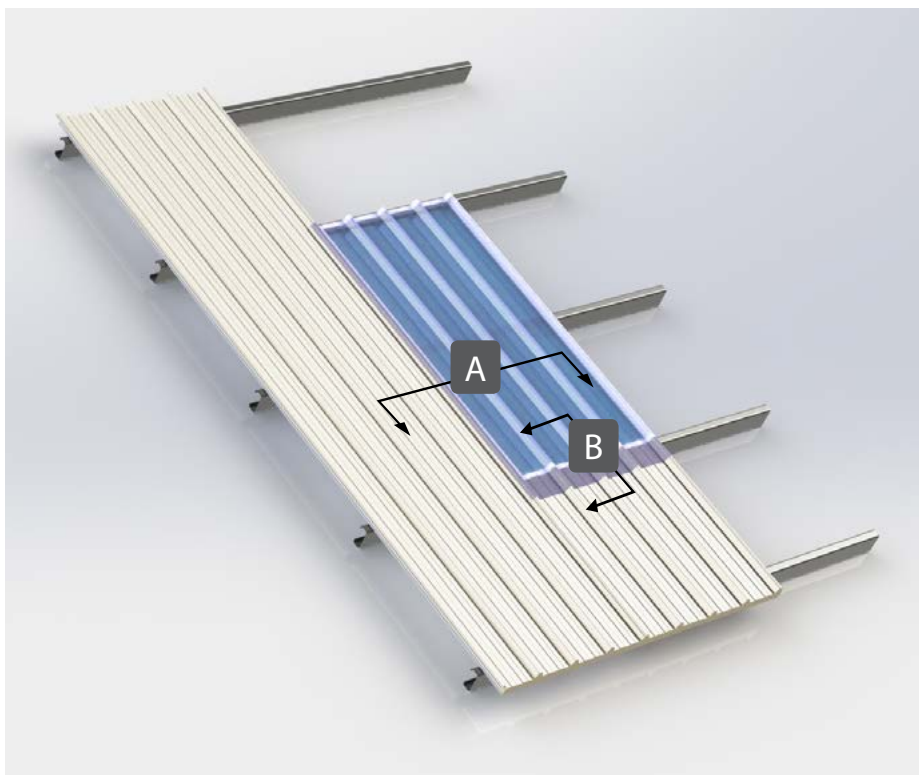
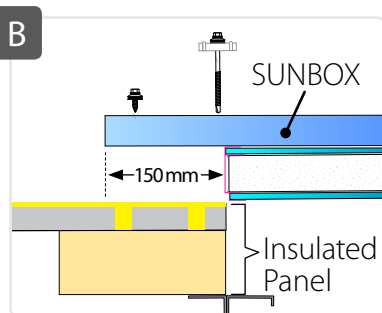
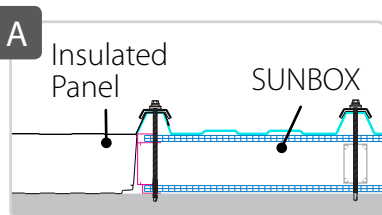
Apply 2 lines of butyl tape between them across the lower panel as indicated in the drawing. Leave overlap corrugation free of screws.



3

Laying SUNBOX on panels

Lay the SUNBOX on the panels so that it overlaps both the lateral and the bottom panel.

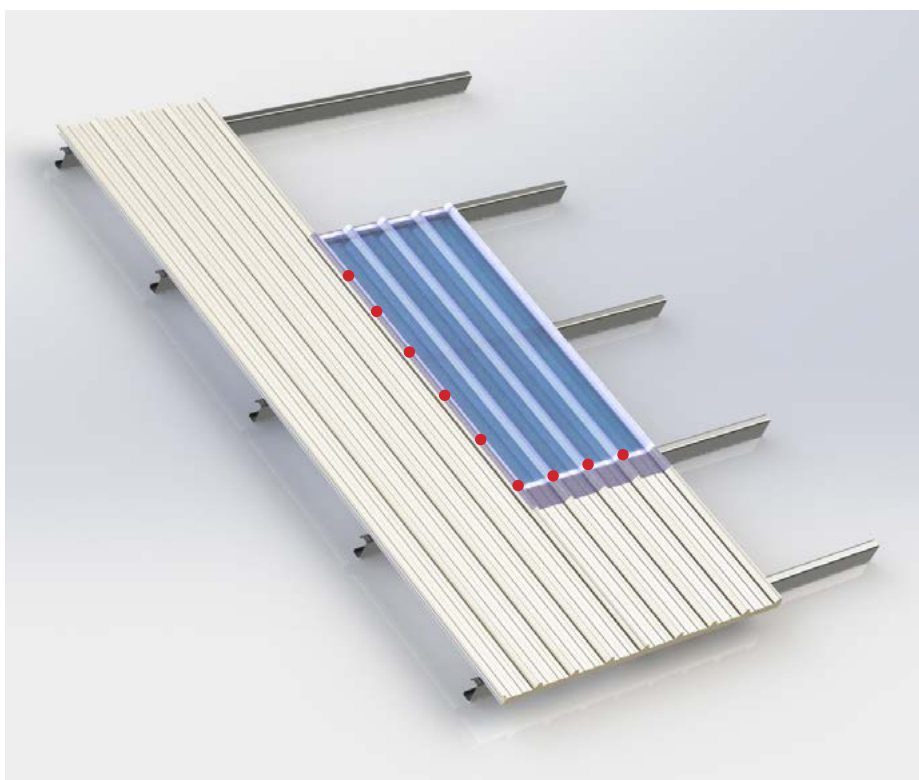


4

Pre-drilling holes and fixing the screws

Predrill 10 mm holes in the SUNBOX, in places where screws will be fixed, in order to allow for thermal expansion.

Fix all the screws and leave overlap corrugation free of screws at top of SUNBOX. For the specific screws requirement, Please refer to page 2.



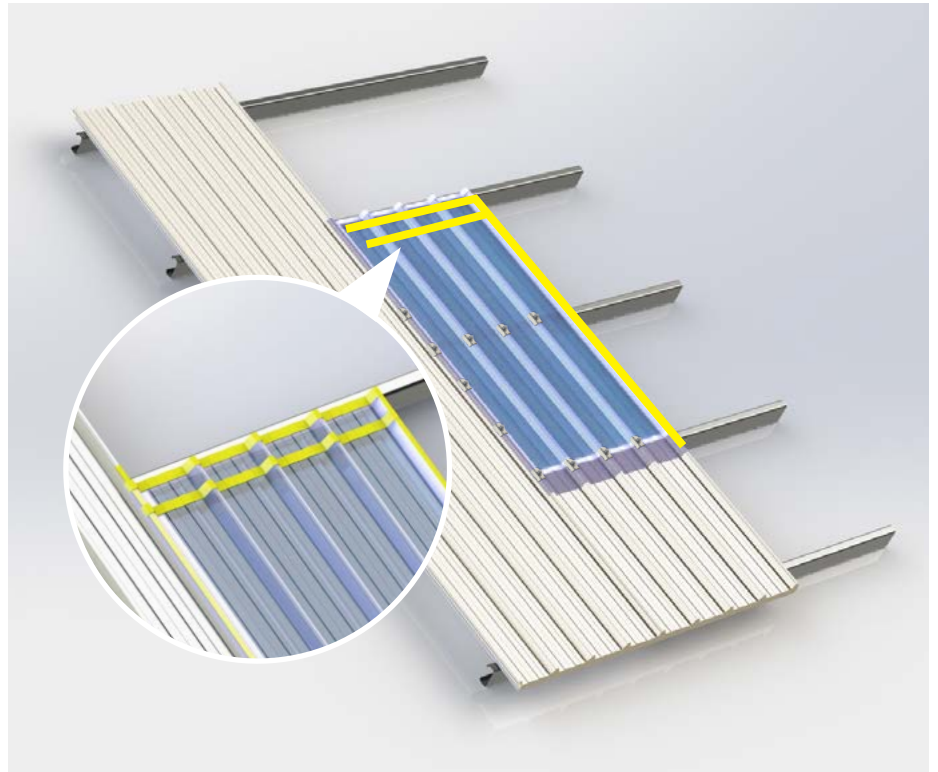
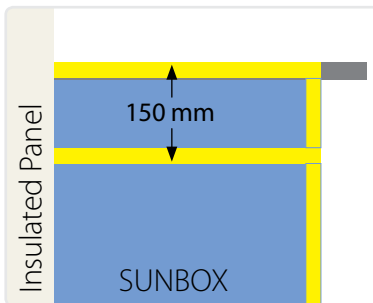
5

Applying butyl tape before placing the upper panel

Apply 2 lines of butyl tape across the upper panel as indicated.

Apply Butyl tape on the marked lateral corrugation of the SUNBOX.

 Butyl Tape



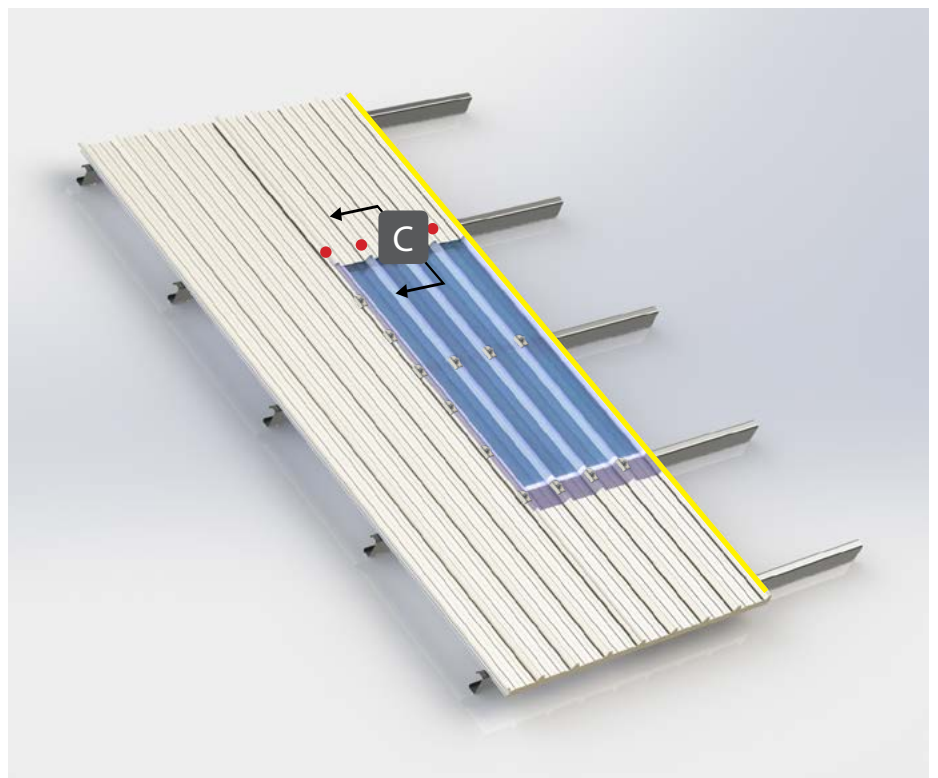
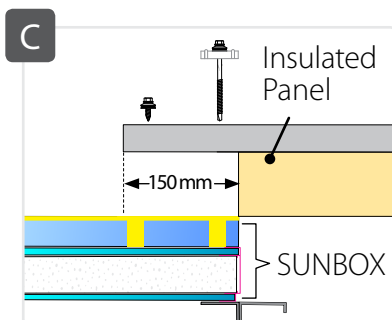
6

Laying and fixing the upper panel

Place the upper insulated panel over the SUNBOX and lateral panel.

Fix all the screws and leave lateral overlap corrugation free of screws.

Apply butyl tape on the lateral overlap corrugation.



Installation Guidelines

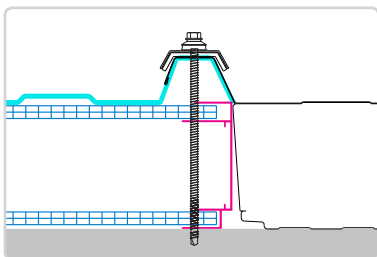
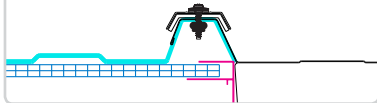
7

Fixing the upper insulated panel

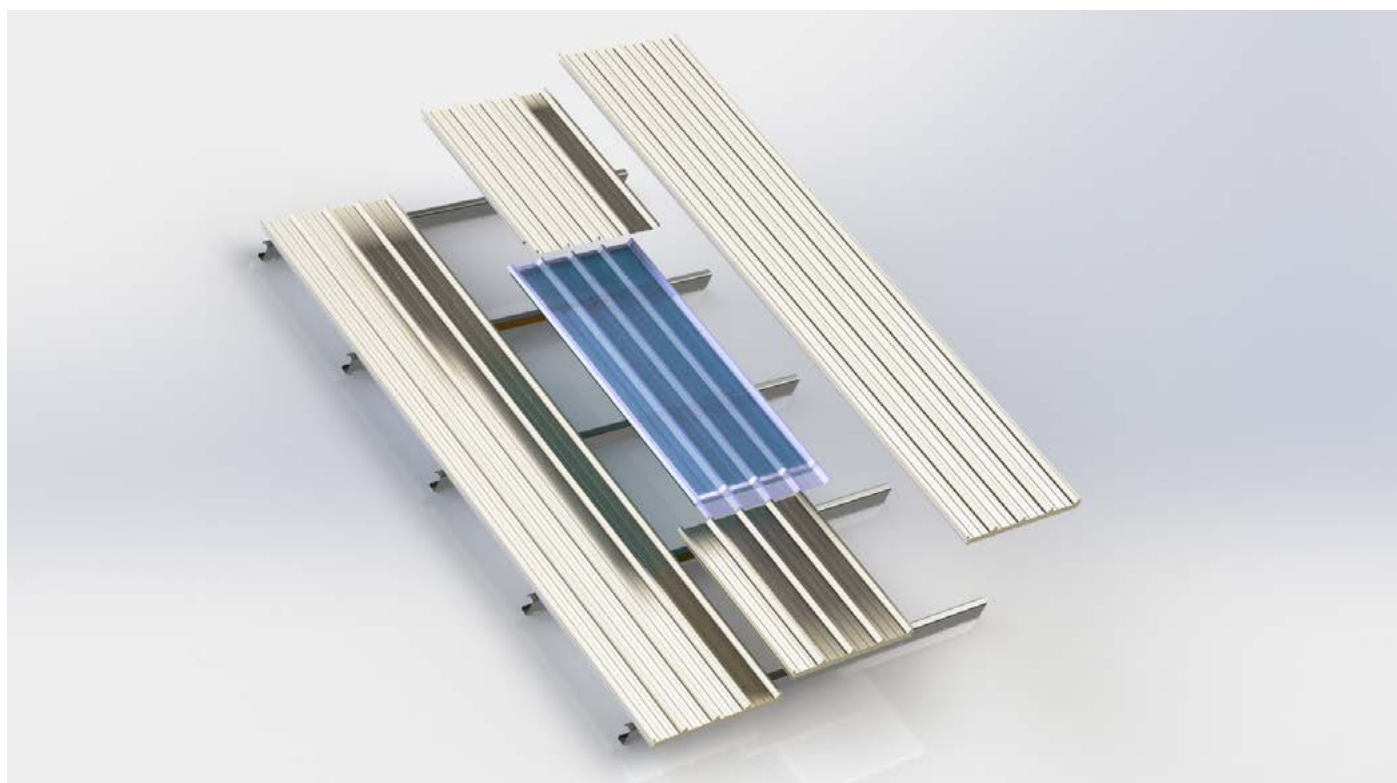
Place the lateral insulated panel over the SUNBOX and the lateral panels.

Fix all the screws including stitching screws every 30-40 cm.

Stitching
Screws

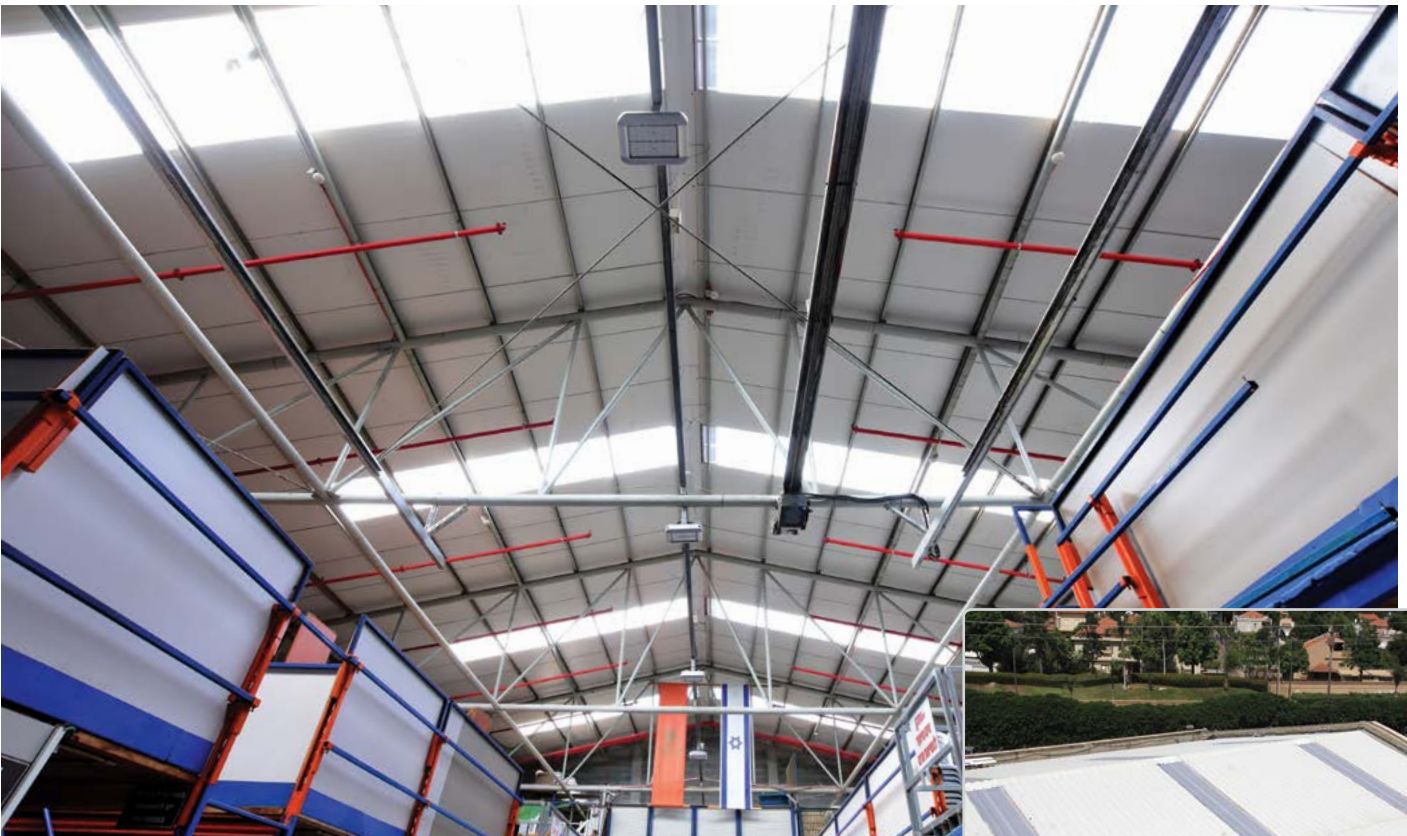


SUNBOX installation sequence





Project: Logistic Warehouse, Israel - Before SUNBOX.



Project: Logistic Warehouse, Israel - With SUNBOX.



External View

SUNBOX®

MANUFACTURER'S 15 YEARS LIMITED WARRANTY

Definition

"SUNBOX®" transparent or translucent Polycarbonate insulated system for insulated roofing (hereinafter "the Product") are hereby warranted by PALRAM Industries (1990) Ltd. (hereinafter "the Manufacturer"), subject to any other terms contained herein:

Scope of Warranty

In addition to any rights and remedies under Australian Consumer Law, the Manufacturer warrants (subject to the conditions set out below) as follows:

Light Transmission

The Product shall not lose more than 7% of its light-transmitting capability (hereinafter "decrease") for a period of 10 years from the commencement date and shall not lose more than 1% per year from the end of the period of 10 years from the commencement date, as defined below, as a direct and exclusive result of solar radiation impact (as measure pursuant to the procedures specified in ASTM E-313-05).

Breakage

The Product shall not break due to loss of impact strength as a direct and exclusive result of weathering and/or, shall not break as a direct and exclusive result of the impact of hail, measuring up to 25mm (1") diameter, attaining a velocity of up to 20 m/s (44.7kmph) (Loss of above capability shall be hereinafter referred to as "breakage"). Excessive loss of impact strength will be determined by test according to ISO 6603/1-1985(E) and/or ASTM D-5628-95 method F, to be applied on a sample of the broken sheet. This warranty applies only if the sample will be brittle broken in this test into separate pieces (shatter).

Commencement Date

The commencement date shall be the date of the Product's manufacture or – if such date does not appear on the product – the date upon which the Product was purchased from the Manufacturer.

Limitations

This warranty shall be valid only if the product is handled, stored, cleaned, installed and maintained in accordance with Manufacturer's written instructions.

Claims and Notifications

Every warranty claim must be notified in writing to the Manufacturer within the warranty period and immediately after occurrence of decrease or breakage, enclosing the original sales receipt and this warranty. The claimant must allow the Manufacturer to inspect any or all of the sheets involved and the installation site itself while the sheets are still in their original position and have not been removed or moved or altered in any way and/or return the sheets to the Manufacturer for testing. The Manufacturer reserves the right to investigate independently the cause of any failure.



PALRAM SA/NT
517A Cross keys Road
Cavan SA 5094
Tel: (08) 8262 2288
Fax: (08) 8262 3388
salessa@palram.com

PALRAM NSW/ACT
Unit 2, 26 Redfern St,
Wetherill Park, NSW 2764
Tel: (02) 8788 6100
Fax: (02) 8788 6199
salesnsw@palram.com

PALRAM QLD
Unit 9C / 380 Bilsen Road
Geebung QLD 4034
Tel: (07) 3172 5581
Fax: (07) 3172 5516
salesqld@palram.com

PALRAM VIC/TAS
34 Buys Court
Derrimut VIC 3030
Tel: (03) 9219 4444
Fax: (03) 9219 4455
salesvic@palram.com

PALRAM WA
74 Christable Way
Landsdale WA 6065
Tel: (08) 9302 4173
Fax: (08) 9302 5287
saleswa@palram.com



10.2019-601057

In as much as Palram Industries has no control over the use to which others may put the material, it does not guarantee that the same results as those described herein will be obtained. Each user of the material should make his own tests to determine the material's suitability for his own particular use. Statements concerning possible or suggested uses of the materials described herein are not to be construed as constituting a license under any Palram Industries patent covering such use or as recommendations for use of such materials in the infringement of any patent. Palram Industries or its distributors cannot be held responsible for any losses incurred through incorrect installation of the material. In accordance with our company policy of continual product development you are advised to check with your local Palram Industries supplier to ensure that you have obtained the most up to date information.

